

Funding Opportunity Announcement No. BOR-DO-19-F010
WaterSMART Cooperative Watershed Management Program
Phase I Grant Application

D.2.2.2. Title Page

**Project Title: St. Vrain Basin Watershed Health
and Restoration Plan**



**LEFT HAND
watershed center**

Submitted by:

**Left Hand Watershed Center
Jessica Olson, Executive Director
P.O. Box 1074,
Niwot, CO 80544-0210
www.watershed.center
jolson@lwog.org
[303-746-7937](tel:303-746-7937)**

D.2.2.3. Table of Contents

D.2.2.2. Title Page	i
D.2.2.3. Table of Contents	ii
D.2.2.3. Technical Proposal and Evaluation Criteria	1
D.2.2.4 Executive Summary	1
D.2.2.4. Background Data.....	1
D.2.2.4. Project Location	3
D.2.2.4. Technical Project Description and Milestones	3
E.1. Evaluation Criteria	10
E.1.1.Evaluation Criterion A – Watershed Group Diversity and Geographic Scope	10
E.1.2.Evaluation Criterion B – Addressing Critical Watershed Needs.....	16
E.1.3.Evaluation Criterion C – Implementation and Results	22
E.1.4.Evaluation Criterion D – Department of the Interior Priorities.....	24
Map 1 – St. Vrain Basin Watershed.....	25
Map 2 – Stakeholder Boundaries Map.....	25
D.2.2.5. Project Budget	26
Budget Proposal	26
Table 1 – Total Project Cost Table	26
Table 2 – Budget Proposal Table	26
Budget Narrative	27
D.2.2.6. Environmental and Cultural Resource Compliance.....	29
D.2.2.7. Required Permits or Approvals	30
D.2.2.8. Letters of Support.....	31
D.2.2.9. Official Resolution	55
D.2.3. Unique Entity Identifier and System for Award Management	57

D.2.2.3. Technical Proposal and Evaluation Criteria

D.2.2.4 Executive Summary

- **Date:** November 13, 2019
- **Applicant Name, City, County, State:** Lefthand Watershed Oversight Group, Doing Business As Left Hand Watershed Center (the Watershed Center), Longmont, Boulder County, Colorado.
- **Project Summary:** This project aims to continue the Watershed Center’s work protecting and restoring watersheds for people and the environment by developing a Watershed Health and Restoration Plan (Plan) for the St. Vrain Basin Watershed. Plan development will involve integrating on-going watershed health management and monitoring efforts throughout the watershed in a shared adaptive management framework developed collaboratively, with input from diverse stakeholders. Our goal is to use this shared framework to make more informed management decisions as a watershed and to better track broad progress towards basin-wide watershed health goals, resulting in a healthier and more resilient St. Vrain Basin Watershed. Funding from the Bureau of Reclamation will be used to support Watershed Center staff time and hired consults to complete tasks related to outreach and engagement, plan development, and project design for the Watershed Health and Restoration Plan. This project will contribute to FOA goals by supporting a local watershed group in partnering with diverse stakeholders to work across jurisdictional boundaries to find collaborative solutions for watershed management that promote sustainable water use, smart conflict resolution, and cooperation.
- **Length of Time and Completion Date:** We anticipate that this work will require two years, with an estimated completion date of July 15, 2022.
- **Federal Facility:** The proposed project is not on a Federal Facility.

D.2.2.4. Background Data

The 980-square-mile St. Vrain Basin Watershed is located in the Colorado Front Range northwest of Denver. The watershed flows from high-elevation headwaters in the mountains to urbanized communities in the plains and foothills. Elevations in the watershed generally range from 13,000 feet to 5,000 feet and include the following communities: Boulder, Nederland, Erie, Superior, Lafayette, Louisville, Lyons, Hygiene, Ward, Jamestown, and Longmont. Historic metals mining activities in upper portions of the watershed continue to influence present day watershed conditions through impacts on water quality.

The watershed includes two major sub-watersheds, St. Vrain Creek and Boulder Creek. St. Vrain Creek flows through the northern portions of the watershed and Boulder Creek flows through the southern portions of watershed. Tributaries and smaller creeks feed both sub-watersheds. Major tributaries include North, Middle, and South Boulder Creek; Como Creek; Fourmile Creek; Coal Creek; North, Middle, and South St. Vrain Creek; and Left Hand Creek. Boulder Creek converges with St. Vrain Creek west of I-25 and flows into the South Platte River

downstream of Platteville. Big Thompson borders the watershed to the north and Clear Creek borders the watershed to the south.

Watershed streamflow originates primarily as snowmelt near the Continental Divide and discharge varies each year with changing snowpack depth and climate. Below the headwaters, streamflow is highly influenced by a complex water-management system driven by water rights. Diversions throughout the watershed remove water from the stream for agricultural, municipal, domestic, and industrial uses. Reservoirs store water and trans-basin diversions allow for exchange of water with other watersheds through pipelines and canals. Additionally, treatment wastewater effluent can account for substantial instream flows in lower portions of the watershed. Agriculture land accounts for nearly 50% of land use in the watershed, while urbanized areas account for 4% or 45 square miles of land. Currently 21 municipal and special district wastewater treatment plants operate in the watershed. Of these 21 plants, seven are major contributors.

Overall, climate change impacts in our semi-arid (water limited) environment combined with the highly managed nature of the watershed are resulting in a range of watershed health issues that are affecting ecological resilience. Issues related to water quality, forest health, and flooding are causing a decline in ecological resilience. Growing populations in Boulder County and surrounding communities further exacerbate these issues by increasing demands on water resources. The watershed supports water supply for 295,500 people who depend on the watershed for its economic, ecological, recreational, and historical values. A summary of key issues is provided below.

- Water Quality – Keep It Clean Partnership identified four primary water quality issues in the St. Vrain Basin Watershed: *E. coli*, nutrients (total phosphorus, total nitrogen and chlorophyll-a), aquatic life (benthic macroinvertebrate multi-metric), and metals. Most of these issues are directly impacted by land use and water quantity in the stream. *E. coli* is the most common water quality impairment and a high priority for the Keep It Clean Partnership. In the lower watershed, increased nutrient loading from agricultural fields transported to the stream by irrigation return flows has negative impacts on water quality. Another concern is dry up periods during low flow when all or nearly all of the water remaining in the stream is diverted into ditches resulting in aquatic life issues. In the upper watershed, mine related impacts and metals loading are present due to the historic mining legacy.
- Forest Health – The U.S. Forest Service, Boulder County, City of Longmont, and others agree that forest composition in the upper portions of the watershed poses a serious threat to watershed health and resilience. Forests throughout the landscape are very dense, with smaller trees and fewer meadows. This composition increases the vulnerability of our forests to threats such as large wildfires, insect epidemics, and disease, especially in the face of climate change (predicted warmer and drier periods). Forest health is particularly

concerning because threats will compromise downstream resources (e.g. water treatment infrastructure, habitat, erosion, water quality).

- Flooding – Despite extensive flood recovery restoration efforts, the effects of the September 2013 flood event still linger throughout our watershed. During the flood, high peak flow and sediment/debris inputs caused streams to migrate and experience deposition, erosion, and loss of riparian vegetation and habitat. Today these changes continue to threaten the ecological resilience of the watershed. Additionally, future flooding has become a more significant concern for our community as we face realities such as climate change (more severe weather events), local population growth (estimate at 0.6% to 0.8% per year), and land-use change (towards more development and urban land use). Left Hand Watershed Center does not currently have a prior working relationship with Reclamation.

D.2.2.4. Project Location

St. Vrain Basin Watershed is located in Boulder County, Colorado approximately 20 miles northwest of Denver, Colorado. The Hydrologic Unit Codes (HUC) for the St. Vrain Basin Watershed is 10190005 and the area is 978 square miles. Project-related work will occur across the watershed, from headwaters through the urban corridor and rural plains.

D.2.2.4. Technical Project Description and Milestones

Applicant Category

Left Hand Watershed Center (the Watershed Center) is seeking funding as an Existing Watershed Group to develop a Watershed Health and Restoration Plan for the St. Vrain Basin Watershed. We are applying as an Existing Group based on our non-profit designation and experience with watershed planning efforts in Left Hand Watershed. However, recent expansion of our mission and geographic scope from the Left Hand Watershed to the greater St. Vrain Basin Watershed will require support more aligned with formation of a New Watershed Group. Therefore, while we are applying as an Existing Group, we anticipate that our needs related to outreach, pre-planning, and information gathering will be closer to those of a New Watershed Group.

Established in 2005, the Watershed Center is a 501c3 non-profit organization located in Longmont, Colorado. From 2005 to 2015, we focused our efforts on oversight of local mine clean-up activities in Left Hand Creek. In 2016, we secured over nine million dollars to implement twenty flood recovery projects throughout Left Hand Watershed. These projects aim to reduce flood risks, stabilize streambeds and banks, restore the ecological health of the watershed, and improve human health and safety. In 2019, at the request of stakeholders, we expanded our geographic scope beyond the Left Hand to the St. Vrain Basin Watershed. The purpose of this expansion was increase the positive impact of our successful tools and services for the benefit of watersheds, communities, and environment at a regional-scale. We also

updated our mission to reflect this expansion of geography and services. Today, our mission is to protect and restore watersheds for people and the environment using a collaborative and science-based approach.

The table below provides a summary of our ongoing and recently completed projects. As described in “Eligibility of Applicant” below, all of our projects incorporate work to promote sustainable use of water resources.

Service Area	Project Name	Project Description
Adaptive Management	St. Vrain Adaptive Management	Adaptive management at recently completed creek restoration projects in the St. Vrain Watershed (\$52,500; November 2018-December 2019)
Watershed Science	Water Quality Data Analysis	Analysis of ten years of water quality data collected by the City of Longmont (\$8,000; 2019)
Watershed Science	Fish Passage & Education	Feasibility study to opportunities for improving fish passage in Left Hand Creek and develop education activities and resources related to working rivers (\$78,000; 2019 – 2023)
Community Science	Community Science	Citizen science plan and activities using mobile and web platforms for collection, management, and sharing of data (\$143,500; 2018 – 2023)
Restoration	Upper Left Canyon	Flood recovery restoration at eight sites including beaver dam analogs, channel grading, floodplain grading, asset protection, and bank protection (\$2,000,000; 2018 – 2020)
Adaptive Management	Left Hand Adaptive Management	Adaptive management at recently completed creek restoration projects in Left Hand Creek Watershed (\$384,271; 2018 – 2023)
Adaptive Management	Adaptive Management Plan	Development of plan, framework, and guide for adaptive management in Left Hand Watershed (\$46,500; 2018)
Restoration	Three Reaches	Flood recovery restoration at eleven sites including channel grading, floodplain grading, asset protection, and bank protection (over \$8,750,000; 2016 – 2017)
Stewardship	Stewardship Handbook	Education resources about watershed stewardship for creek-side property owners. (\$200,000; 2016 – 2017)

Eligibility of Applicant

The Watershed Center is an existing watershed group in Longmont, CO that is expanding our geographic scope and mission from Left Hand Creek to the greater St. Vrain Basin Watershed. We meet the requirements of an Existing Watershed Group (per C.1. and A.2.) because we are a 501c3 non-profit organization governed by a diverse Board of stakeholder representatives from the water resources community. Our current Board of Directors includes agriculture, recreation, environment, special interest, municipal, and private property representative, as well as federal, state, and local government representatives. As an organization that works to protect watershed health through science, stewardship, adaptive management, and restoration, our ability to fulfill our mission is dependent on in water quality and quantity.

We actively promote sustainable use of water resources by assessing water health and resilience using sound science, identifying areas of concern, and working with stakeholders to find workable, multi-benefit solutions. An example of this is our work to restore Left Hand Creek after the 2013 floods. Our assessments indicated lack of base flow depth to support aquatic life. This was also a concern for water owners who rely on efficient water delivery. We worked with stakeholders to identify and implement restoration of low flow channels as a multi-benefit solution for supporting aquatic life, efficient water delivery, and sustainable use of water resources.

While we meet the requirements of an Existing Watershed Group, our expansion of mission and geography aligns us more with the New Watershed Group category due to group development requirements (e.g. outreach, information gathering, and pre-planning) that will be required to build partnerships with stakeholders in the greater St. Vrain Basin Watershed.

Goals

Organizational Goals

Our mission is to protect and restore watersheds for people and the environment using a science-based and collaborative approach. The table below summarizes the goals we pursue in support of our mission and actions that we are currently taking to achieve these goals.

Goal	Actions to Achieve Goal
Assess, understand, and plan for watershed health and resiliency using robust and science-based approaches.	Implement existing Adaptive Management Plan in the Left Hand Watershed and develop a comprehensive Watershed Health and Restoration Plan for the St. Vrain Basin Watershed with input from diverse watershed-wide stakeholders.
Plan and implement on-the-ground projects that advance watershed restoration practices.	Implement on-the-ground projects that are informed by science, achieve multiple benefits, and advance watershed restoration practices in the Front Range using novel and cost-effective approaches.

Bring together diverse community members with competing values to develop on-the-ground solutions through open communication and cooperation.	Provide ample opportunities for community and stakeholder engagement and fostering a “safe space” for discussing watershed issues where all voices are heard.
Build a community-wide stewardship ethic rooted in watershed science and place-based, participatory learning.	Implement a Community Science Program, which engages community members and stakeholders in stewardship through participation in science-based activities.

Project Goals

This project aims to continue the Watershed Center’s work protecting and restoring watersheds for people and the environment by developing a Watershed Health and Restoration Plan (Plan) for the St. Vrain Basin Watershed. Plan development will involve integrating on-going watershed health management and monitoring efforts throughout the basin in a shared adaptive management framework developed collaboratively, with input from diverse stakeholders. Initial efforts will focus on stakeholders that manage and monitor watershed health in the St. Vrain Basin Watershed. Our goal is to use this shared framework to make more informed management decisions as a watershed and to better track broad progress towards basin-wide watershed health goals, resulting in a healthier and more resilient St. Vrain Basin Watershed.

Our proposed approach to achieve this goal involves the following key objectives:

1. Understand and document the unique needs and goals of diverse stakeholders throughout the watershed by working with individual stakeholders to build trust and partnership in order to understand their watershed health goals and needs (what is known, where is the overlap, and are the gaps);
2. Achieve broad-based consensus and understanding about shared watershed health goals by engaging stakeholders in collaboration, dialog, and discussions; and
3. Develop a Plan that:
 - a. Incorporates the latest sound science by working to bridge knowledge gaps between practitioners and researchers;
 - b. Is relevant and adaptable in the face of dynamic watershed processes, including climate change by applying adaptive management approaches;
 - c. Compliments existing watershed health planning efforts by working with stakeholders to integrate existing watershed management plans and tools; and
 - d. Is actionable by incorporating project design and prioritization elements that support implementation of multi-benefit on-the-ground restoration projects.

A critical aspect of this project is collaboration, so that stakeholders can learn from each other to achieve a greater level of broad consensus regarding watershed health and resilience, as well

as the role of adaptive management in helping achieve these goals. Another key aspect of this project is integrating existing plans and tools to ensure that we are accounting for partner goals, building upon other tools and frameworks, and avoiding duplication of efforts (not re-inventing the wheel).

Approach

Summary

Our proposed approach for completing watershed group development and restoration planning activities includes three key components that are well-aligned with all tasks areas described in C.3.1. First, we will conduct outreach, information gathering, and pre-planning to stakeholders in the Boulder Creek and St. Vrain sub-watersheds to build partnerships in the greater watershed beyond Left Hand Creek. Next, we will work with our expanded partner group to develop a collaborative and science-based Watershed Health and Restoration Plan (Plan) that builds upon existing efforts without duplication. Lastly, we develop conceptual plans for two to four site-specific watershed management projects based on information learned during the outreach and planning process.

Task Areas

As described above, our project tasks align with all three tasks described in C.3.1. Below we described detailed activities proposed for each task.

Task A. Watershed Group Development

The purpose of this task is to conduct stakeholder and community outreach to strengthen existing partnerships and build new partnerships in the watershed. This outreach effort will focus on the St. Vrain and Boulder sub-watersheds, where we recently expanded our geographic scope. We have already started building partnerships in the St. Vrain sub-watershed through our work with the St. Vrain Creek Coalition who hired the Watershed Center to function as their staff. We plan to build new partnerships in the Boulder sub-watershed starting with the City of Boulder and Mile High Flood District. Outreach efforts will involve working with individual stakeholders to understand their goals and needs related to holistic watershed health from the headwaters to the urban corridor.

While initial efforts will focus on stakeholders that manage and monitor watershed health in the St. Vrain Basin Watershed, a key aspect of this task is reaching a comprehensive group of stakeholders interested in watershed health and resilience. Therefore, work will include research and planning to ensure that our approach is inclusive. This will include working with a hired outreach facilitator/outreach coordinator, developing informative and visually appealing outreach materials, and ensuring that we can maximize participation by stakeholders by accounting for unique stakeholder needs (e.g. agriculture community schedule depends on growing season).

Our initial list of stakeholders, who have all provided support letters for this project, includes: Mile High Flood District, City of Boulder, City of Longmont, St. Vrain and Left Hand Water Conservancy District, Keep it Clean Partnership, Boulder County, Colorado Department of Public Health and Environment, Colorado Forest Restoration Institute, U.S. Forest Service, Left Hand Water District, University of Colorado, Northern Water, Trout Unlimited, Town of Lyons, and St. Vrain Creek Coalition. As part of this task, we will plan to build upon this initial list by conducting outreach to additional stakeholders identified through our existing list of supportive stakeholders and other research. For example, these will include Colorado Water Conservation Board, Colorado Parks and Wildlife, U.S. Geological Survey, Colorado State Forest Service, and other watershed and special interest groups.

Outreach efforts will include a development of an outreach plan and supporting materials to help ensure a smooth and efficient outreach process. Initial stakeholder meetings will focus on obtaining clear recognition about what a healthy watershed looks like for each stakeholder, what data they collect in support of their goals, and where they see gaps or opportunities related watershed-health data collection or available information. Work under this task will also include synthesizing findings from stakeholder interviews to update the outreach plan as we learn more and refine our approach.

Another key aspect of this task will be to build upon other existing similar efforts in the St. Vrain Basin Watershed without duplicating efforts. This will involve research of existing plans including a thorough assessment to ensure that our plan specifically addresses gaps and compliments other efforts, rather than overlaps any existing efforts. We are currently aware of a number of on-going similar efforts that we will assess and integrate where appropriate. These include: St. Vrain & Left Hand Stream Management Plan, Keep It Clean Partnership 319 Basin Plan, City of Boulder Grasslands Plan, Boulder Creek Master Plan, Mile High Flood District adaptive management planning efforts, City of Longmont Channel Maintenance Plan, Boulder County Comprehensive Plan, Stream Quantification Tool, Stream Health Index, and Ecological Integrity Assessment and Floristic Quality Assessment tool. Additional efforts and tools will be incorporated during the project process.

The anticipated deliverables associated with this task include an outreach plan, three to five outreach materials (brochures, newsletters, concept models, infographics, etc.), 10-15 stakeholder meetings or presentations, and a map showing relevant watershed health efforts across the watershed.

Task B. Watershed Restoration Planning

The purpose of this task is use information learned in Task A. to develop a Watershed Health and Restoration Plan (Plan) rooted in collaboration and sound science. While Task A focuses on gathering information, this task focuses on applying the information to develop a Plan that will helps achieve our stated goals (see Goals section above). Work under this task will include technical analysis of watershed health assessments, research into watershed health indicators

appropriate for diverse conditions throughout the watershed, re-engaging stakeholders regarding unique goals and needs, mapping and graphic development to compile and present information, and completion of draft and final plan.

A key aspect of this task involves integrating an adaptive management approach into the Plan. Key adaptive management elements that we plan to include under this task include (1) hypotheses related to the performance of watershed health indicators that tie directly to goals (desired future conditions); (2) performance standards that identify an acceptable science-based threshold of performance for each watershed health indicator; and (3) suggested watershed management actions for when thresholds are exceeded.

Work under this task will also include integrating existing watershed health data collected by various stakeholders in the watershed to help maximize data usefulness by contextualizing existing data with other data. This will help close data gaps and tie existing data to specific actions. Most importantly, this integration of data will facilitate shared learning and understanding about basin-wide watershed health among diverse stakeholders with varying goals. By understanding data collected by each partner in the context of all other data, our community will have be well-positioned to make more informed management decisions as a basin and to track broad progress towards basin-wide watershed health goals.

Completion of this task will include hiring technical experts such as professional consultants, facilitators, and graphic designers to help ensure that the plan is scientifically robust, relevant to stakeholders, easy to digest, and visually appealing (e.g. includes info-graphics, conceptual models, etc.). The anticipated deliverable associated with this task is a Watershed Health and Restoration Plan that serves as a tool for stakeholders to better understand and plan for a healthy and resilient St. Vrain Basin Watershed.

Task C. Watershed Management Project Design

The purpose of this task will be to identify priority projects during early planning and complete concept designs for two to four key projects. Work under this task will include developing a prioritization approach rooted in adaptive management and with support from stakeholder. We will develop plans by hiring a consultant team to support pre-planning for development of conceptual designs and introductory environmental compliance plans. We will work with stakeholders and consultant teams to identify realistic timelines, milestones, and cost estimates for high priority projects. Example projects may include site-specific fish passage improvements, fire mitigation, and/or watershed restoration. More details related to this task will be identified during Tasks A and B.

The anticipated deliverable associated with this task is: two to four restoration designs (including concept designs, cost estimates, timelines, milestones, and environmental compliance plans) for two to four key projects. Specific projects and sites will be identified during Tasks A and B.

E.1. Evaluation Criteria

E.1.1. Evaluation Criterion A – Watershed Group Diversity and Geographic Scope

Sub-criterion No. A1. Watershed Group Diversity

Please describe the efforts that you will undertake to ensure that the watershed group will include a diverse array of stakeholders, including outreach to stakeholders or collaborating with other groups or partners.

1. **A description of the stakeholders within the watershed that affect or are affected by the quantity or quality of water within the watershed (“affected stakeholders”).**

Each person that lives, works, or recreates in the St. Vrain Basin Watershed falls in the category of “affected stakeholder.” As a stakeholder driven organization, engaging our community in collaborative processes to plan, prioritize, and implement projects is the foundation our approach to building watershed health and resilience. We will use this same approach to complete this project. Specific affected stakeholder groups in the St. Vrain Basin Watershed include agriculture, land development, recreation, environment, municipal water supplies, private property owners, and governments (state, local, and federal).

2. **For New Watershed Groups, a description of the affected stakeholders within the watershed that support the formation of watershed group. To the extent possible, please identify the specific stakeholders or groups that support the formation of the watershed group, describe their interest in the watershed, and reference any letters of support or pledges/donations from affected stakeholders.**

Affected stakeholders throughout the St. Vrain Basin Watershed support the expansion of the Watershed Center’s geography and mission through this project. The table below provides a list of specific new stakeholders that support this project via letters of support and/or pledges/donations. Each stakeholder’s interest in this project is noted.

A common theme among stakeholder listed is that each group manages and/or monitors watershed health in the St. Vrain Basin Watershed by collecting data and engaging in planning efforts. It is our hope that through this project we can strengthen partnerships with the stakeholders listed here and leverage their knowledge and relationships in the watershed to add new partners to this list of stakeholders.

Affected Stakeholder	Interest Area	Support?
Boulder County	Watershed-wide health; Community outreach support.	\$60K, See Letter
City of Boulder	Watershed health on City of Boulder properties; Understanding their properties in the context of the greater watershed; Adaptive management.	\$30K, See Letter

Affected Stakeholder	Interest Area	Support?
City of Longmont	Watershed health in St. Vrain sub-watershed.	Support Letter
Mile High Flood District	Ecological resilience in urban reaches; Adaptive Management.	\$20K, See Letter
Keep It Clean Partnership	Watershed-wide health; Understanding their sites in the context of the greater watershed.	\$15K, See Letter
U.S. Forest Service	Upland watershed health and fire resilience; Balanced stewardship and use of public lands	Support Letter
Colorado State Forest Service	Watershed health related to fire resilience.	Support Letter
Trout Unlimited	Recreation; Water quality and quantity; Fish habitat.	Support Letter
Colorado Forest Restoration Institute	Forest health; Fire resilience; Bridging gap between forests and rivers; Adaptive Management.	Support Letter
St. Vrain & Left Hand Water Conservancy District	Watershed health in St. Vrain sub-watershed; Agriculture; Recreation; Water rights issues; Expanding our mission and geography.	\$15K, See Letter
CO Dept. of Public Health & Environment	Water quality; Environmental health.	Support Letter
Town of Lyons	Watershed health in St. Vrain sub-watershed; Expansion of our mission and geography.	Support Letter
St. Vrain Creek Coalition	Watershed-wide health in St. Vrain sub-watershed; Expanding our mission and geography.	Support Letter
Left Hand Ditch Company	Water rights; Efficient water delivery; Reduced maintenance around ditches; Agriculture.	Support Letter
Left Hand Water District	Municipal; Watershed health in Left Hand Creek; Mining.	Support Letter
Northern Water	Municipal; Watershed-wide health; Adaptive management.	Support Letter
Division of Mining Reclamation and Safety	Water quality; Mining issues; Expanding our mission and geography.	Support Letter
University of Colorado Boulder	Integrating research and practice; Adaptive management; Expanding our mission and geography.	Support Letter
Town of Jamestown	Mining; Watershed health in Left Hand Creek sub-watershed; Expanding our mission and geography.	Support Letter

- 3. For Existing Watershed Groups, an explanation of the current membership of the watershed group and whether the current membership is representative of the affected stakeholders within the watershed. In other words, if the watershed group is already diverse, please provide support demonstrating the diversity of the group.**

Affected stakeholders currently represented on the Watershed Center's Board of Directors include diverse representatives from our community across a range of sectors and interests in Left Hand Creek. These include landowners and residents, Left Hand Water District (LHWD), Boulder County, City of Longmont, St. Vrain and Left Hand Water Conservancy District, Town of Jamestown, Town of Ward, James Creek Watershed Initiative, U.S. Forest Service, Left Hand Ditch Company (LHDC), Trout Unlimited, and Colorado Division of Reclamation and Mining. The diversity of stakeholders represented on our Board reflects our inclusive approach for stakeholder collaboration and our value of having open communication and cooperation among all affected stakeholders in the watershed.

4. Details on how you plan to target affected stakeholders to ensure that your group will represent a diverse set of stakeholders within the watershed, such as engaging in outreach to include new members, or collaborating with different groups or partners (e.g., outreach or partnership activities, public meetings, newsletters, marketing materials, or recruitment of new members).

Our primary approach for targeting affected stakeholders will be through individual face-to-face meetings. Our work establishing a robust collaborative organization in the Left Hand Watershed (listed in question three, above) has demonstrated that this approach is the most effective way to build trust needed for successful collaboration and partnership. Therefore, our focus in targeting affected stakeholder throughout the St. Vrain Basin Watershed will be to meet individually with each stakeholder at a time and location that works best for them. For example, we know that stakeholders in the agricultural community have limited availability during key growing season times of the year. Therefore, we will schedule an in-person meeting to accommodate their needs.

We will also leverage knowledge and relationships of the existing list of affected stakeholders (noted in question two, above) to reach out to additional affected stakeholders. Examples include watershed and community groups, fire districts, and special interest groups. We will pursue meetings with these groups through our partners.

We will support outreach efforts by developing outreach and communication tools to help explain complex concepts surrounding watershed health and restoration in visually and aesthetically appealing ways using conceptual models, infographics, and images where possible.

Following establishment of relationships through individual partner meetings, we will host workshops supported by professional facilitators to building collaboration among partners.

Lastly, we will utilize our existing social medial accounts, e-mail campaigns, and newsletters to communicate information to a broad and diverse audience. Our current mailing list

includes over 700 recipients. We will build this and leverage our partners' mailing lists to maximize outreach efforts to the great St. Vrain Basin Watershed.

5. Any other support demonstrating that the watershed group will include a diverse membership.

We recognize that diverse membership is critical to finding workable solutions for our complex and interconnected watershed. One way that we plan to build diverse membership is by including forest health in watershed restoration planning efforts. We recognize that a truly holistic approach to watershed health planning must include bridging the river-forest divide and we have included partners on this project (e.g. Forest Service, Colorado Forest Restoration Institute) to support this effort.

Another area where we emphasize diverse membership involves bridging the practitioner-researcher divide. We are already working to bridge this gap by collaborating with university partners to incorporate experimental designs into our watershed restoration projects. We currently have one project with an experimental design to quantify the ecological benefits achieved with multi-thread channel restoration. We have included university partners on this project to ensure that we do not miss any opportunity to apply or advance the best available watershed science and advance.

Lastly, we value our agricultural community immensely and seek opportunities to achieve environmental benefits while supporting agriculture. We have demonstrated this by developing a close partnership with our local ditch company (see support letter from Left Hand Ditch Company) and we relish the opportunity to continue finding ways for environment and agriculture to collaborate, build trust, and partner to implement on-the-ground projects that meet multiple goals.

Sub-criterion No. A2. Geographic Scope

Under this sub-criterion, higher priority will be given to proposed or Existing Watershed Groups representing the full geographic extent of the watershed.

Please provide the following information in response to this sub-criterion:

1. Provide a map illustrating the geographic boundaries of the area in which the watershed group will work.

The geographic boundaries of this project area include the entire St. Vrain Basin Watershed (HUC-8 Sub basin 10190005). See Map 1 – St. Vrain Basin Watershed (page 25).

2. The map should also identify the location or boundaries of the stakeholder groups within the area and indicate which stakeholders are currently involved in the group and which will be targeted through outreach. If a map of stakeholder location cannot be provided, please describe the geographic scope of the area to the best of your knowledge.

A mix of public, non-profit, and private entities comprise stakeholders within the planning area as shown on Map 2 – Stakeholder Boundaries (page 25) are further described in the table below. Additional stakeholders that will be targeted in this planning project include Colorado Water Conservation Board, Colorado Parks and Wildlife, U.S. Geological Survey, and other watershed and special interest groups.

Affected Stakeholder	Geographic Interest Area
Private Landowners & Community	Entire planning area (St. Vrain Basin)
Boulder County	Entire planning area (St. Vrain Basin), with focus on County owned properties
City of Boulder	Entire planning area (St. Vrain Basin), with focus on City of Boulder owned properties.
City of Longmont	Entire planning area (St. Vrain Basin), with focus on City of Longmont owned properties.
Mile High Flood Control District	Boulder Creek Watershed Service Area includes the lower portions of Boulder Creek.
Keep It Clean Partnership	Entire planning area (St. Vrain Basin)
U.S. Forest Service	Western portion of St. Vrain Basin, with focus on USFS owned properties.
Colorado State Forest Service	Western portion of St. Vrain Basin, with focus on State Lands owned properties.
Trout Unlimited	Entire planning area (St. Vrain Basin)
Colorado Forest Restoration Institute	Western portion of St. Vrain Basin and beyond
St. Vrain and Left Hand Water Conservancy District	St. Vrain & Left Hand Creek Watershed, which encompasses the northern portion of the St. Vrain Basin
Colorado Department of Public Health & Environment	Entire planning area (St. Vrain Basin)
Town of Lyons & Lyons Schools	St. Vrain Creek and tributaries
St. Vrain Creek Coalition	St. Vrain Creek and tributaries
Left Hand Ditch Company	Left Hand Creek
Northern Water	Entire planning area (St. Vrain Basin) and beyond
Division of Reclamation Mining and Safety	Entire planning area (St. Vrain Basin) and beyond
University of Colorado Boulder and Colorado State University- Fort Collins	Entire planning area (St. Vrain Basin) and beyond
Town of Jamestown	James Creek Watershed
Left Hand Water District	Left Hand Creek Watershed

- 3. Describe the extent to which the planned membership of the watershed group will represent the full geographic scope of the area in which the group intends to work. If**

applicable, describe the extent to which the watershed group already represents the geographic scope of the area.

As demonstrated by our Board of Directors (see Affected Stakeholders Section), Watershed Center membership currently represents the full geographic extent of the Left Hand Creek from the headwaters to the confluence. Our representation of Left Hand is also demonstrated by restoration work we completed in the canyon, foothills, and plains watershed zones.

Our aim with project is to extend our membership through partnerships to the full geographic extent of the St. Vrain Basin Watershed. Initial project partners who support this project with funding and/or a letter of support are provided above (see Affected Stakeholders Section) and represent this full extent. As demonstrated by this list, we have already completed outreach to key stakeholders involved in watershed data collection, management, and planning throughout the St. Vrain Basin Watershed. Particularly, we aimed to include partners who encompass diverse interests and focus area in the entire watershed from the headwaters to the urban corridor (Mile High Flood District), from upland focus areas (Colorado Forest Restoration Institute and USFS) to water chemistry focus areas (Keep It Clean Partnership), and many in-between. However, we plan to add additional partnerships during the project process further to ensure we are maximizing collaboration and input from stakeholders throughout the watershed.

Extending partnerships will involve various levels of engagement in different parts of the watershed. In some areas of the greater watershed, we can build upon existing partnerships because stakeholders sit on our current Board (due to geographic overlap with Left Hand). For example, Boulder County and City of Longmont are key stakeholders in both Left Hand and St. Vrain Creeks. We also have a strong relationship with St. Vrain Creek Coalition built over the past year by functioning as their staff when needed, attending all their Board meetings, and monitoring their completed restoration projects. In other of the greater watershed, partnerships are in early phases (e.g. City of Boulder, Mile High Flood District) and will take more effort to build trust. Particularly in Boulder Creek, we will need to conduct additional outreach to identify new potential stakeholder groups.

4. Describe the efforts that you will undertake to ensure that the watershed group will target stakeholders that represent the full geographic scope of the area in which the watershed group will work.

We will ensure that our outreach approach is comprehensive by leveraging the knowledge and experience of our existing project partners who are well established throughout the watershed. The partners we selected for this project are key representatives with strong ties to particular sectors and interest groups. We will use their knowledge and connections to reach new diverse affected stakeholders. Many of our partners viewed our role as the outreach arm for this effort as a key benefit of this Plan based on our past successes with

outreach and engagement in the Left Hand Creek community (demonstrated by completion of twenty flood recovery restoration projects on private property).

E.1.2.Evaluation Criterion B – Addressing Critical Watershed Needs

Up to 35 points may be awarded under this criterion based on the extent of the critical issues or needs within the watershed that can be addressed by the New or Existing Watershed Group. Sub-criteria are listed in descending order of importance.

Sub-criterion No. B1. Critical Watershed Needs or Issues

Please describe in detail the critical issues or needs occurring within the watershed including, for example: declining ecological resiliency, water shortages, flooding, structural impairments, water supply, water quality issues (e.g., addressing Total Maximum Daily Loads, or targeting high priority activities in your state's "Measure W" watersheds), endangered species issues, conflicts over water supply, and other related issues faced by affected stakeholders.

The Center's watershed restoration plan will aim to address issues related to watershed resilience in the St. Vrain Basin Watershed, with focus on critical issues related to water quality, forest health, and flooding. As described above (see Background Data question), these three key issues contribute to declining ecological resilience as they compromise the ecological function in our watershed. For example, denser forests are more susceptible to severe wildfire that may impact critical infrastructure, impaired benthic macroinvertebrate communities cannot support healthy fish populations, and excessive sediment deposition causes increases erosion and flood risks by disconnecting streams and floodplains. All of these issues reduce the ability of our watershed to bounce back from additional threats such as climate change and land use change.

A critical need to help address these issues is an improved approach to watershed management that emphasizes science and collaboration. Science is needed to utilize the best available data for planning in the face of complex and difficult to predict watershed processes. Collaboration is needed to coordinate across jurisdictional boundaries by understanding individual stakeholder goals and issues in the context of the entire watershed. Together science and collaboration will help our community obtain the information and consensus needed for action to address these issues.

Lastly, our project may have positive impacts for endangered or threatened species identified by USFWS. These include American Peregrine Falcon, Bald Eagle, Mexican Spotted Owl, Lake Chub, Greenback Cutthroat Trout, Canada Lynx, North American Wolverine, Preble's Meadow Jumping Mouse, North Park Phacelia, and Ute Ladies'-tresses. Planning related to these species will be incorporated into this effort and future implementation of restoration activities to improve watershed health and resiliency based on this plan will provide better ecological function and habitat to support these species.

Sub-criterion No. B2. Developing Strategies to Address Critical Watershed Needs or Issues

Please describe in detail how the group plans to positively contribute to the management of the issues and needs of the watershed through the proposed activities. Only address those Task Areas that you propose to complete with this grant funding.

This project will positively contribute to management of issues (including water quality, forest health, and floods) and needs by (1) applying a science-based adaptive management approach to managing the watershed; (2) helping stakeholders make progress towards implementation of high priority, multi-objective watershed management projects; and (3) integrating on-going efforts to assess watershed health across stakeholder boundaries. Details for each contribution are described below.

- 1. Science-based adaptive management:** This project will make a positive contribution to watershed management in the St. Vrain Basin Watershed by integrating existing watershed planning efforts through the lens of adaptive management. The benefits of adaptive management for natural resource planning are well documented in research and scientific literature (Epanchin-Niell et al., 2018). Particularly, adaptive management has been shown to help reduce uncertainty in complex systems, such as watersheds, which face threats from climate change, floods, fires, and other dynamic ecosystem processes (Epanchin-Niell et al., 2018). Additionally, the Watershed Center has been applying this approach for two years in Left Hand and we have found it to be our best tool for improving watershed health and resilience in the face of climate change. By incorporating this approach our plan, will apply and improving science-based best management practices to better track and respond to watershed-wide health issues and needs.
- 2. Multi-objective projects:** This project will make a positive contribution to watershed management by incorporating management actions (multi-objective projects) in the planning process. Stakeholders throughout the watershed expressed concern regarding lack of action associated with many watershed health-related data collection and planning efforts. Our plan will address this need by tying watershed health indicators directly to specific pre-planned management actions within an adaptive management framework. This approach will enable stakeholders to use this framework to identify multi-benefit projects that address watershed issues and are informed by a thorough understanding of multiple watershed indicators (e.g. floodplain connectivity, channel morphology and habitat, riparian condition, macroinvertebrate community, fish community) both upstream and downstream of project areas.
- 3. Integration of efforts:** This project will make a positive contribution to watershed management by integrating existing data (collected by diverse stakeholders) into one shared plan and framework that will help maximize data usefulness by contextualizing existing data with other data. This will help close data gaps and identify where duplicative efforts.

Reference: Epanchin-Niell, R.S., Boyd, J.W., Macauley, M.K., Scarlett, Lynn, Shapiro, C.D., and Williams, B.K., 2018, Integrating adaptive management and ecosystem services concepts to improve natural resource management—Challenges and opportunities: U.S. Geological Survey Circular 1439, 62 p., <https://doi.org/10.3133/cir1439>.

Please address the following when responding to this sub-criterion:

Task A -Water Group Development: Describe the stakeholder outreach and partnership building that will be conducted and explain how it will contribute to the management of the critical watershed issues and needs?

Please see Task A – Watershed Group Development for a description of our stakeholder outreach and partnership building process.

1. If the watershed group will build on previous partnership building efforts, describe these efforts and how the watershed group will expand upon them through this grant.

This project will build on previous partnerships that the Watershed Center initiated in 2019. After two years on implementing an adaptive management framework in Left Hand, stakeholders throughout the St. Vrain Basin Watershed reached out to learn more about our approach. At the request of stakeholders, we determined a need for a better way to track broad progress towards watershed health and make more informed management decisions as a watershed. Through this process, we began building partnerships in the St. Vrain Basin Watershed that led to this project proposal.

Now, we plan to strengthen and extend our new partnerships through work on this project. Our approach to strengthening these partnerships will focus on collaborating, understanding partner goals and needs, and working together to define desired future conditions that will address critical issues and needs. As part of this project we plan to establish Memorandums of Understanding (MOUs) with each partner to formalize the partnership. Key partner building efforts are described below:

- After St. Vrain Creek Coalition scaled back their scope in 2018, they hired the Watershed Center to function as their staff, attend all of their Board meetings, and complete monitoring and assessment of their restoration projects. Through this partnership, we established a strong presence in the St. Vrain community. Stakeholders in this watershed and coalition requested expansion of our mission and geography to include the St. Vrain sub-watershed. These additional new partners include Town of Lyons and Lyons Schools.
- Mile High Flood District began collaborating with the Watershed Center in 2019 based on shared interest adaptive management approaches and their need to improve assessments on ecological resilience.

- Keep It Clean Partnership began partnering with the Watershed Center in 2019 based on shared interest adaptive management approaches, integrating water quality data with ecological health, and partnering on a holistic approach to watershed planning from the headwaters to the urban corridor. Their current focus is on water quality in urban areas.
- City of Boulder began partnering with the Watershed Center in 2017 on a small grant to assess flood recovery projects on their property areas. In 2019 they requested to grow that partnership based on their interest in adaptive management and assessing watershed health across jurisdictional boundaries in the context of the greater watershed.
- Researchers from the University of Colorado and the Colorado Forest Restoration Institute (Colorado State University) began partnering with the Watershed Center in 2018 to help bridge gaps between researchers and practitioners. We are currently working together on a river restoration project that includes experimental design and on a forest health monitoring initiative. They are interested in continuing and growing this partnership in a larger geographic area.
- Watershed Center recently started leading a Button Rock Forestry Collaborative sub-committee that is working to implement forest health projects in the St. Vrain sub-watershed that span across City of Longmont, Boulder County, Colorado State Forest Service, and private properties.

Additionally, we will leverage existing partnerships with our Board of Directors who all support this project and the recent expansion of our mission and scope. Though our Board is comprised of representatives of Left Hand, many of our members also represent the greater St. Vrain Basin Watershed. These includes residents, Left Hand Water District (LHWD), Boulder County, City of Longmont, St. Vrain and Left Hand Water Conservancy District, U.S. Forest Service, Left Hand Ditch Company (LHDC), Trout Unlimited, and Colorado Division of Reclamation and Mining. We plan to leverage these existing strong and long-standing partnerships to support and provide information for this project. Their support is also demonstrated by the Board Resolution included with the Letters of Support.

2. Will the group establish relationships with conservation organizations advocating for balanced stewardship and use of public lands, or advocating for increased access to the Department lands for hunting, fishing, and other recreation? If so, how?

We have relationships with several groups who advocate for these types of issues. These include Leave No Trace, Boulder Mountain Bike Alliance, American Whitewater, and a number of other trail and off-highway vehicle groups. We address these groups by partnering with the Forest Service and others to increase education and outreach about balancing recreational activities with environmental protection and stewardship.

Task B -Watershed Restoration Planning: Describe the process the watershed group will use to develop a watershed restoration plan and how completing the plan will contribute to the management of the critical watershed issues and needs.

Please see Task A – Watershed Group Development for a description of the plan development process.

1. How does the group plan to gather information regarding the critical issues and needs of the watershed (e.g., contacting government agencies, talking to stakeholders, literature research, monitoring and modeling activities)? Will the group use science to identify best practices to manage land and water resources and adapt to changes in the environment? If so, how?

Information gathering about critical watersheds issues and needs will occur through stakeholder interviews, research, and professional expertise. By casting a wide and inclusive net during outreach conducted during Task A, we will help build the trust and relationships needed to obtain comprehensive and honest information about issues and needs from diverse stakeholders. We will support what we learn from stakeholders by conducting research related to science and best practices. Using science to protect and restore watersheds is inherent to our organizational mission and will be a fundamental aspect of all of our work on this project. We will also work with university researchers and hired consults to ensure that we are using the best available science throughout the entire plan development process.

We will also gather information about best management practices by building on other planning efforts in the St. Vrain Basin Watershed (without duplicating efforts). We will start this project with an assessment of these existing efforts, ensuring that the new plan compliments other efforts and builds upon the best science and management practices identified by these efforts. An initial list of efforts includes: St. Vrain & Left Hand Stream Management Plan, Keep It Clean Partnership 319 Basin Plan, City of Boulder Grasslands Plan, Boulder Creek Master Plan, Mile High Flood District adaptive management planning efforts, Boulder Comprehensive Plan, City of Longmont Channel Maintenance Plan, Stream Quantification Tool, Stream Health Index, and Ecological Integrity Assessment and Floristic Quality Assessment tool. Additional efforts and tools will be incorporated during the project process.

2. Will the group identify opportunities to resolve conflicts? If so, how?

Yes, we will identify opportunities to resolve conflicts by conducting outreach to individual stakeholders prior to bringing stakeholders together for joint collaboration. By first taking time to acknowledge, understand, and document individual stakeholder goals, issues, and needs, we will identify areas where these may conflict among stakeholders. Our approach to resolving conflicts is to focus the stakeholder conversation on gaining consensus on what the shared outcomes and vision is for the watershed rather than focus the conversation on

solving the problems. Using this shared vision and goal statement, we can work towards identifying lasting solutions for all stakeholders.

Building trust with stakeholders is critical for successful collaboration. We accomplish this through transparency, reliability, frequent communication, and science-based decision-making. In working with stakeholders, we are fully transparent about our organization and all aspects of our work. We respect time and energy commitments from stakeholders by being consistent and reliable. We also stay proactive in our communication with stakeholders via check-ins, updates, and progress reports. Transparency, reliability, and communication helps our stakeholders learn to trust us by knowing what to expect from us. We also build trust using science, by referencing data and using this data to inform our decisions. In focusing the stakeholder conversation on a shared desired future condition, we will rely on built stakeholder trust and robust science to define the outcomes/vision.

3. Will the group complete an analysis to prioritize issues within the restoration plan?

We will prioritize issues using a matrix and alternatives analysis approach. We will start by conducting stakeholder interviews to identify issues, goals, and needs. We will document this information in a matrix. We will then assess issues using an alternatives analysis approach based on impact to watershed health, associated threats/risks, required support, and other factors. This assessment will be a living document which will change over time as new information is learned and watershed conditions evolve.

4. If the watershed group will build on previous efforts, describe these efforts and how the watershed group will expand upon them through the proposed work.

This project will build on the Watershed Center's existing adaptive management framework for tracking progress towards maintain or improve ecological conditions and resilience following restoration and recovery from the 2013 floods. This framework provides a good starting point for assessing comprehensive watershed health based on key indicators including floodplain connectivity, channel morphology and habitat, riparian condition, macroinvertebrate community, and fish community. The framework format has been effective for prioritizing restoration work based on sound scientific data collected during two years following restoration. For example, benthic macroinvertebrate and revegetation data are helping assess the effectiveness of restoration methods in reaches with water quality impairments and prioritize future projects. However, a key aspect of this project is collaboration and developing a plan that is shared by diverse stakeholders. Therefore, we plan to modify and update the framework to integrate it with stakeholder goals and effort identified during Task A.

Task C -Watershed Management Project Design: Describe the process that the watershed group will use to design projects and how completing the project design will contribute to the management of the critical watershed issues and needs.

1. To the extent known, describe the project(s) for which the watershed group will complete a design.

We anticipate developing designs for two to four projects. Based on our current knowledge two example projects are described below.

- i. Diversion Modification: Develop designs for operational modification at several diversions operated by Left Hand Ditch Company to keep more water in the creek and improve fish passage.
- ii. Forest Health: Develop designs for landscape-scale fire mitigation activities across multiple boundaries including city, county, state, federal, and private property.

2. Will the group complete an analysis to prioritize watershed management projects and identify specific project locations? If yes, describe this analysis.

We will prioritize projects based on analysis on scientific data pertaining to performance of key watershed health indicators.

3. What type of site-specific project design and engineering will the watershed group complete?

The Watershed Center will complete concept-level designs as described in Task 3 – Watershed Management Project Design for priority watershed health and restoration projects by professional consults with technical expertise and experience in watershed restoration and design. Given the two-year timeframe and the extensive outreach and planning needed, we anticipate only reaching a concept-level design for two to four priority projects by expect that supporting information provided by the consultants will include timelines, milestones, and cost estimates that will set us up for obtaining future funding for completing construction designs and implementation.

4. How will the watershed group develop a project timeline and milestones for the project?

Yes, as described in Task C – Watershed Management Project Description, the Watershed Center will work with professional consultants to incorporate timelines and milestones, as well as cost estimates, into project design plans.

5. Will the watershed group work with Reclamation’s environmental and cultural resource staff to determine what type of site-specific environmental compliance will be necessary for the project(s) upon implementation (Federal environmental compliance will be required if the project is implemented with Federal funding or is located on Federal lands).

Yes, the Watershed Center will work with Reclamation’s staff to ensure compliance with all environmental requirements are incorporated into project design plans.

6. If the watershed group will build on previous efforts, describe these efforts and how the watershed group will expand upon them through the proposed work. NA

E.1.3.Evaluation Criterion C – Implementation and Results

Sub-criterion No. C1. Understanding of and Ability to Meet Program Requirements

Applicants should describe their plan for implementing the proposed scope of work.

The table below summarizes tasks, milestone, start and end dates, and costs. Please see Technical Proposal for detailed descriptions of tasks and milestones..

Task and Milestone	Start	End	Cost
Task A – Watershed Group Development: Milestones include outreach activities, gathering information, and pro-planning activities.	07/2020	07/2021	\$62,000
Task B – Watershed Restoration Planning: Milestones include watershed health assessments, technical analysis and map, stakeholder re-engagement, project prioritization, and plan.	07/2021	07/2022	\$80,000
Task C – Watershed Management Project Design: Milestone include conceptual plans.	12/2021	07/2022	\$78,000

Sub-criterion No. C2. Building on Relevant Federal, State, or Regional Planning Efforts

Please describe how the proposed activities of the watershed group will complement or meet the goals of relevant Federal, state or regional planning efforts.

This project will build upon other existing similar efforts in the St. Vrain Basin Watershed without duplicating efforts by starting with an assessment of existing similar on-going efforts and ensuring that the new plan specifically addresses gaps and compliments other efforts, rather than overlaps any existing efforts. Key plans include the St. Vrain & Left Hand Stream Management Plan, Keep It Clean Partnership 319 Basin Plan, City of Boulder Grasslands Plan, Boulder Creek Master Plan, Mile High Flood District adaptive management planning efforts, City of Longmont Channel Maintenance Plan, EPA Stream Quantification Tool, Stream Health Index, and Ecological Integrity Assessment and Floristic Quality Assessment tool. Additional efforts and tools will be incorporated during the project process.

This project will complement these existing plans by utilizing plan-specific goals associated with watershed health indicators. For example, the 319 Basin Plan has specific standard associated with water quality while the EPA Stream Quantification Tool has specific performance thresholds associated with riparian condition. Our plan will incorporate each of these thresholds into a shared framework. As part of our planning effort, we will assess occurrence of gaps or overlaps among plans. We anticipate instances where different plans have conflicting information related to watershed health indicators. We plan to address these questions collaboratively – through discussion, research, and knowledge sharing to reach consensus.

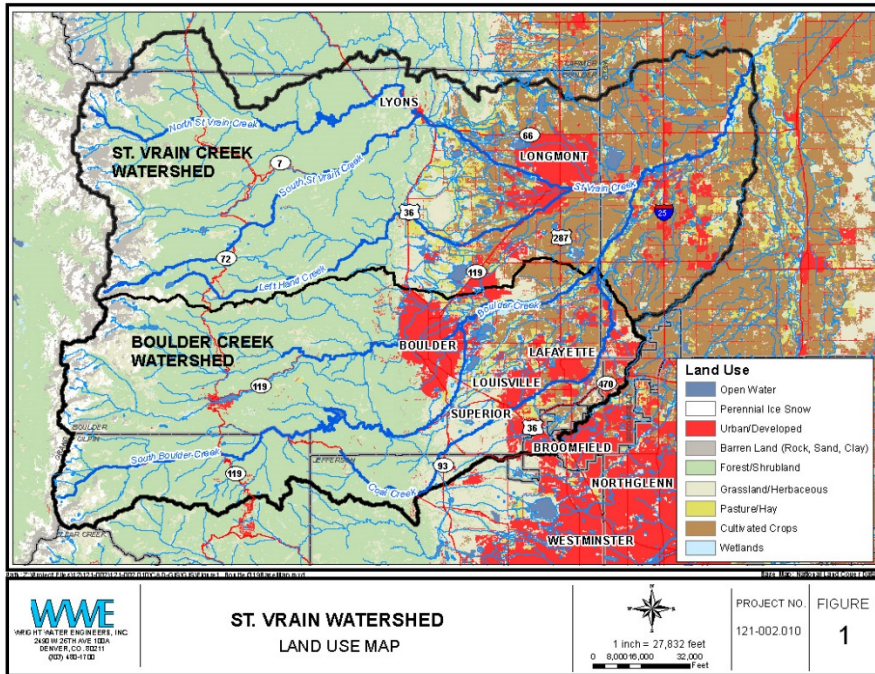
Lastly, our project aligns well with Colorado Water Plan and South Platte Basin Implementation plan priorities recommendations regarding coalition-based partnership plans, projects, monitoring, and adaptive management strategies. Our project will directly support Colorado

Water Plan goals pertaining to understanding, protecting, maintaining and improving conditions of streams, lakes, wetlands, and riparian areas to promote long-term resiliency; protecting and restoring watersheds critical to water infrastructure, environmental or recreational areas; and potentially restoration, recovery, and resiliency of endangered, threatened, and imperiled aquatic and riparian dependent species and plant communities. Our project will also support the South Platte Basin Implementation Plan's goal of enhancing the health and vitality of rivers and streams in the South Platte Basin, sustaining ecosystems, and providing important environmental, societal, and economic benefits for the region.

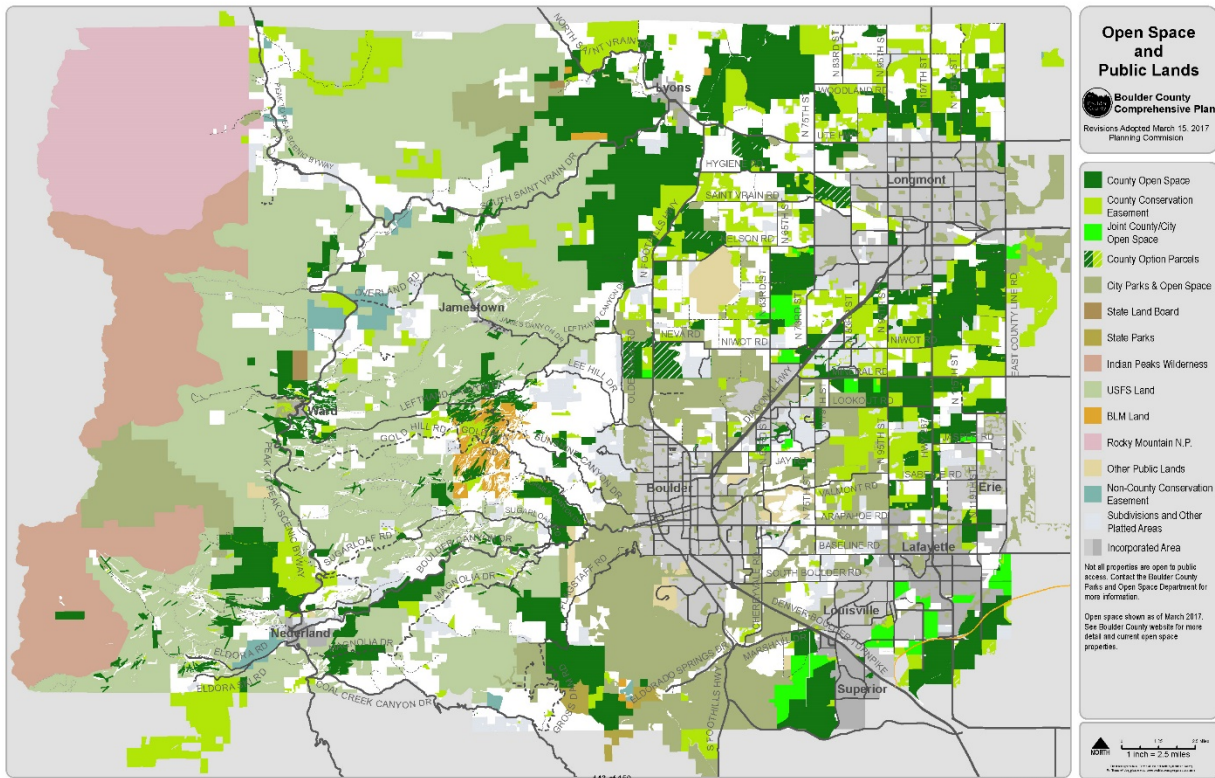
E.1.4.Evaluation Criterion D – Department of the Interior Priorities

- 1. Creating a conservation stewardship legacy second only to Teddy Roosevelt**
 - a. Utilize science to identify best practices to manage land and water resources and adapt to changes in the environment;** Science is inherent to our mission and adaptive management is one of our key focus areas. Specifically, our adaptive management approach to watershed restoration planning will be rooted in strong science that emphasizes learning by doing and adjusting based on what is learned in response to changing environmental conditions and processes. We will ensure that science is used to identify the best management practices by hiring technical experts, conducting reviews of scientific literature, working with university researchers, and leveraging information learned in other science-based plans (see Sub-criterion No. B2)
 - e. Foster relationships with conservation organizations advocating for balanced stewardship and use of public lands;** We will foster relationships with these groups by working with the Forest Service and others on outreach and education efforts aimed at protecting the environment while recreating.
- 2. Utilizing our natural resources – All NA**
- 3. Restoring trust with local communities**
 - b. Expand the lines of communication with Governors, state natural resource offices, Fish and Wildlife offices, water authorities, county commissioners, Tribes, and local communities.** As a grassroots coalition of stakeholders that works across jurisdictional boundaries, we will expand lines of communication through collaboration and assessment of watershed health in the context of the entire watershed. Our approach is to build relationships and trust with each stakeholder, understand their goals and needs, and identify ways for stakeholders to collaborate across their jurisdictional boundaries, and eventually implement on-the-ground projects. Representatives from many of these groups are already supportive of our application and we plan to engage additional representatives as part of the project process (see Sub-criterion No. A1. Watershed Group Diversity).
- 4. Striking a regulatory balance – All NA**
- 5. Modernizing our infrastructure – All NA**

Map 1 – St. Vrain Basin Watershed



Map 2 – Stakeholder Boundaries Map



D.2.2.5. Project Budget

Budget Proposal

The total project cost, is the sum of all allowable items of costs, including all required cost sharing and voluntary committed cost sharing, including third-party contributions, that are necessary to complete the project.

Table 1 – Total Project Cost Table

Source	Amount
Costs to be reimbursed with the requested Federal funding	\$ 100,000
Costs to be paid by the applicant	0
Value of third-party contributions	\$ 120,000
TOTAL PROJECT COST	\$ 220,000

Table 2 – Budget Proposal Table

Budget Item Description	Computation		Quantity Type	Total Cost	BOR Request
	\$/unit	Quantity			
Salaries and Wages					
Executive Director	\$ 42	350	\$/hr	\$ 14,700	
Program Manager	\$ 34	500	\$/hr	\$ 17,000	
Watershed Scientist	\$ 26	625	\$/hr	\$ 16,250	
subtotal				\$ 47,950	\$ 21,578
Fringe Benefits					
Full	35%	\$ 47,950	All employees	\$ 16,783	\$ 7,552
Travel					
Watershed Center staff	0.58	2000	\$/mile	\$ 1,160	\$ 1,160
Equipment					
None					
Supplies and Materials					
Stakeholder Outreach Materials/Brochures (Design & Printing)				\$ 7,308	
subtotal				\$ 7,308	\$ 3,560
Contractual					
Meeting Facilitator	160	120		\$ 19,200	
Engineer	160	300		\$ 48,000	
Landscape Architect/Graphic Design	110	100		\$ 11,000	

Budget Item Description	Computation		Quantity Type	Total Cost	BOR Request
	\$/unit	Quantity			
Ecologist/Forester	130	100		\$ 13,000	
Fluvial Georphologist	120	80		\$ 9,600	
Permitting Specialist	100	80		\$ 8,000	
GIS Specialist	90	200		\$ 18,000	
subtotal				\$126,800	\$ 57,060
Other					
N/A					
Subtotal					
TOTAL DIRECT COSTS				\$200,000	\$ 90,909
Indirect Costs					
De minimis	10%	\$ 200,000	MTDC	\$ 20,000	\$ 9,091
TOTAL ESTIMATED PROJECT COSTS				\$220,000	\$ 100,000

Budget Narrative

Salaries and Wages

The Watershed Center will involve all three full-time staff members in this project. Executive Director, Jessica Olson will oversee general project management, contracts & agreements, project vision & outcomes. In addition, she will attend all stakeholder meetings, review and comment on planning documents and research, and provide project QA/QC. Her hourly rate is \$42/hr and we anticipate ~350 hrs. Watershed Center Program Manager, Yana Sorokin will be the project manager and will oversee project logistics, overseeing contractors’ milestones, lead stakeholder & landowner outreach, and will be responsible for ensuring grant reporting and environmental compliance. Her hourly rate is \$34/hr and we anticipate 500 hrs, which is ~12% of her time for two years. Watershed Center’s Watershed Scientist will undertake watershed restoration planning and stakeholder outreach tasks as directed by the program manager. Her hourly rate is \$26/hour and we anticipate 625 hours, or 15% of her time for two years.

Fringe Benefits

The Watershed Center includes the following elements in calculating fringe benefits for full-time staff: paid vacation time, paid holidays, sick leave, worker’s compensation, state and federal withholdings, short-term disability insurance, unemployment insurance, 3% employer contribution to a retirement plan, and health care plan.

We calculate the fringe rate by calculating the annual amount of each benefit and dividing that amount by total billable hours (2080 minus vacation, sick, holidays) then computing the total hourly rate of all benefits and add this number to the hourly rate of pay to establish the total hourly compensation rate (or fully loaded rate). This rate was then calculated into a percentage by calculating the percentage of the difference between the fully loaded rate and rate with salary only.

Travel

The only travel we anticipate for this project is mileage to & from landowner site visits, community meetings, & stakeholder meetings. These trips will generally occur from Longmont (where our office is located) to various parts of the St. Vrain Basin within Boulder County, estimated at approx. 84 miles per month for two years. We will use the IRS mileage rate (currently estimated at 58 cents/mi). We do not use a different rate of compensation for travel time. We will not require lodging, airfare, or per diems.

Equipment

N/A (None)

Materials and Supplies

Our materials and supplies are for design and printing of new outreach materials to use at landowner and stakeholder meetings. We received quotes for design and printing of updated 8.5x11 booklet with updated watershed conceptual model drawings, and outreach materials at \$7,307, which is the basis for our cost estimate.

Contractual

We plan to hire contractors to help with project delivery tasks associated with all three tasks.

- In Task A, we will hire a facilitator to help facilitate stakeholder meetings. This is estimated at 15 eight-hour meetings. Consultant billing rates were estimated based on quotes received from professional facilitators.
- In Task B and C we plan to hire a team of professional consultants with specialties in engineering, landscape architecture, graphic design, ecology, forestry, fluvial geomorphology, permitting, and GIS. Consultant billing rates and level of effort (hours) are based on quotes received.
- Left Hand Watershed Center's procurement policies follow 2 CFR 200.320, and all contractors used under this grant award will be competitively procured considering both cost and qualifications.

Environmental and Regulatory Compliance Costs

Based on our experiences conducting watershed planning in Left Hand Watershed, we do not anticipate significant need for environmental compliance or permitting. Any necessary regulatory compliance work will be conducted by consultants, including work to analyze what

permitting will be required when restoration projects are implemented at a later stage of the project.

Indirect Costs

The Watershed Center does not have a federally approved indirect cost rate agreement. We therefore rely on the de minimis 10 percent rate.

Total Costs

The total project cost is estimated to be \$220,000, with a \$100,000 request to BOR.

The Watershed Center has the appropriate organizational, financial and procurement policies in place to manage a federal grant. In the past four years, the Watershed Center has successfully completed and closed out seven grants with the Department of Local Affairs Community Block Development Grants for Disaster Recovery. We feel this demonstrates that we have the capacity and management systems in place to successfully carryout a grant from Bureau of Reclamation.

D.2.2.6. Environmental and Cultural Resource Compliance

- **Will the proposed project impact the surrounding environment (e.g., soil [dust], air, water [quality and quantity], animal habitat)? Please briefly describe all earth-disturbing work and any work that will affect the air, water, or animal habitat in the project area. Please also explain the impacts of such work on the surrounding environment and any steps that could be taken to minimize the impacts.**
 - During this planning phase, we do not anticipate affecting the surrounding environment. All planning work will include passive observation and work will be restricted to foot traffic only.
- **Are you aware of any species listed or proposed to be listed as a Federal threatened or endangered species, or designated critical habitat in the project area? If so, would they be affected by any activities associated with the proposed project?**
 - A list of threatened or endangered species is provided in our application. During this planning phase, we do not anticipate directly affecting these species as all work will include passive observation of habitat and will be restricted to foot traffic only
- **Are there wetlands or other surface waters inside the project boundaries that potentially fall under CWA jurisdiction as “Waters of the United States”? If so, please describe and estimate any impacts the proposed project may have.**
 - Yes, there are wetlands in the project boundaries. During this planning phase, we do not anticipate directly affecting wetlands. Planning work will be restricted to foot traffic.
- **When was the water delivery system constructed?**

- The St. Vrain Basin Watershed has many different water delivery systems throughout the entire watershed. Some are more recent, but older structures date back to the 1860s.
- **Will the proposed project result in any modification of or effects to, individual features of an irrigation system (e.g., headgates, canals, or flumes)? If so, state when those features were constructed and describe the nature and timing of any extensive alterations or modifications to those features completed previously.**
 - During this planning phase, we do not anticipate modifying any irrigation features, although planning effort may involve developing plans for modifications as part of the project process with full cooperation from ditch companies and in compliance with all laws.
- **Are any buildings, structures, or features in the irrigation district listed or eligible for listing on the National Register of Historic Places? A cultural resources specialist at your local Reclamation office or the State Historic Preservation Office can assist in answering this question.**
 - Yes, we do anticipate that there are buildings, structures, or features eligible for listing on the National Register of Historic Places. There will be no impact to structures during this planning phase of the project; however, we will work with cultural resource specialists to identify buildings, structures, or features of historic significance in potential project areas during project planning.
- **Are there any known archeological sites in the proposed project area?**
 - Yes, we know that there are archeological sites identified in the Boulder County Comprehensive Plan. There will be no impacts to these sites during this project-planning phase, as we will avoid sensitive areas and restrict work to foot traffic only. In addition, as part of planning for future restoration projects, we will work with experts to identify and avoid project sites with archeological artifacts.
- **Will the proposed project have a disproportionately high and adverse effect on low income or minority populations?**
 - No, our focus will be on watershed health and restoration.
- **Will the proposed project limit access to, and ceremonial use of, Indian sacred sites or result in other impacts on tribal lands?**
 - No, our focus will be on watershed health and restoration.
- **Will the proposed project contribute to the introduction, continued existence, or spread of noxious weeds or non-native invasive species known to occur in the area?**
 - No, this planning project will identify ways to reduce the spread of noxious weeds because it is a key issue for stakeholders.

D.2.2.7. Required Permits or Approvals

At this planning phase, permits and approvals are not required. We will explore the need for permits and approvals as part of the projects in preparation for future implementation phases.

D.2.2.8. Letters of Support



Parks & Open Space

5201 St. Vrain Road • Longmont, Colorado 80503
303-678-6200 • POSinfo@bouldercounty.org • www.BoulderCountyOpenSpace.org

November 13, 2019

Bureau of Reclamation
Mail Code: 84-27814
P.O. Box 25007
Denver, CO 80225

RE: Letter of Support for the Left Hand Watershed Center's Water SMART Cooperative Watershed Management Program, Phase I Grant

Dear Review Committee,

Boulder County is pleased to write in support of Left Hand Watershed Center's (the Watershed Center) application for the Bureau of Reclamation Water SMART Cooperative Watershed Management Program. Completion of this project is an important step as we work toward regional collaboration and partnerships and help ensure long term, basin-wide restoration and recovery.

The Watershed Center's proposed project brings together diverse partnerships throughout the St. Vrain Basin to collaborate on a regional adaptive management framework for assessing watershed health indicators in the basin. This framework will aid the partners in making more informed management decisions and to track broad progress towards basin-wide watershed health goals.

We feel that the Watershed Center has done a good job bringing the appropriate stakeholders to the table and developing a proposal that will result in implementation of a successful project that is well aligned with the goals of the Bureau of Reclamation and the stakeholders. The Watershed Center has a proven record of implementing successful science-based, collaborative projects in both Left Hand and St. Vrain Creeks and we look forward to working with them on this regional adaptive management effort. By completing this project, we will increase connectivity of the many partners and agencies completing watershed planning and management in the St. Vrain Basin. We will also build upon the legacy of recently completed projects while also contributing to the scientific body of knowledge for river restoration.

We are particularly pleased that the proposed project will address data gaps, identify opportunities for improvement, provide tools for assessing long term watershed health, and emphasize stakeholder collaboration. We plan to allocate \$20,000 dollars per year for three years toward this project.

On behalf of the Boulder County Sustainability Office and Boulder County Parks & Open Space, we are pleased to support the Watershed Center in this effort and look forward to working together to build resiliency in the St. Vrain Basin.

Sincerely,

A handwritten signature in black ink, appearing to read "Eric Lane". The signature is fluid and cursive, with a long horizontal stroke extending to the right.

Eric Lane, Director
Boulder County Parks & Open Space

November 1, 2019

Bureau of Reclamation
Mail Code: 84-27814
P.O. Box 25007
Denver, CO 80225

RE: Letter of Support for the Left Hand Watershed Center Watershed Restoration Application

To Whom it May Concern:

We are pleased to write in support of the Colorado Water Conservation Board (CWCB) Colorado Watershed Restoration Program application being submitted by Left Hand Watershed Center (the Watershed Center), entitled “**Adaptive Management at Scale.**” The Mile High Flood District’s (MHFD) mission is to protect people, property, and the environment from flood risks, and we do this by implementing projects that align with our six core values. The Adaptive Management at Scale project directly aligns with two of our core values; to advance the practice and to be stewards of the stream and watershed. This project will help inform the industry of what data to collect and how to use it to indicate the health of our watersheds.

The proposed project brings together diverse partnerships to collaborate on a regional adaptive management framework for assessing watershed health indicators in the St. Vrain Basin. The purpose is to make more informed watershed management decisions and to track broad progress towards basin-wide watershed health goals.

The Watershed Center has done an excellent job bringing the appropriate stakeholders to the table and developing a proposal that will result in the implementation of a successful project that is aligned with the goals of the CWCB and the stakeholders. The Watershed Center has a proven record of accomplishment, implementing successful science-based, collaborative projects in both Left Hand and St. Vrain Creeks, and we look forward to working with them on this regional adaptive management effort.

By completing this project, we will increase the connectivity of the many partners and agencies responsible for watershed planning and management and contribute to the scientific body of knowledge for river restoration. MHFD has budgeted twenty thousand dollars toward this project in 2020.

We encourage you to put a high priority on this proposed project and look forward to working with the Watershed Center to build resiliency in our watersheds.

Sincerely,



FOR
Ken MacKenzie, P.E.
Executive Director



City of Boulder Open Space & Mountain Parks

2520 55th St., Boulder, CO 80301; 303-441-3440
<http://www.osmp.org>

October 29, 2019

Bureau of Reclamation
Mail Code: 84-27814
P.O. Box 25007
Denver, CO 80225

RE: Letter of Support for the Left Hand Watershed Center's Water SMART Cooperative Watershed Management Program, Phase I Grant

Dear Review Committee,

We are pleased to write in support of the Bureau of Reclamation WaterSMART Cooperative Watershed Management Program application being submitted by Left Hand Watershed Center (the Watershed Center), entitled "**St. Vrain Basin Watershed Restoration Planning.**" Completion of this project is important to our community as we work toward regional collaboration and partnerships and help ensure long term, basin-wide restoration and recovery.

The proposed project under consideration brings together diverse partnerships throughout the St. Vrain Basin to collaborate on a regional watershed restoration plan and framework for assessing watershed health indicators in the St. Vrain Basin to make more informed management decisions as a basin and to track broad progress towards basin-wide watershed health goals.

We feel that the Watershed Center has done a good job bringing the appropriate stakeholders to the table and developing a proposal that will result in implementation of a successful project that is well aligned with the goals of the Bureau of Reclamation and the stakeholders. The Watershed Center has a proven record of accomplishment, implementing successful science-based, collaborative, projects in both Left Hand and St. Vrain Creeks and we look forward to working with them on this regional watershed planning effort. By completing this project, we will increase connectivity of the many partners and agencies completing watershed planning and management in the St. Vrain Basin, and build upon the legacy of recently completed projects, while also contributing to the scientific body of knowledge for watershed restoration.

Preserving water resources is one of the City of Boulder Open Space and Mountain Parks charter purposes (City of Boulder Charter Sec. 176 Open Space Purposes – Open space land).

This project will help Open Space and Mountain Parks in its work by establishing a framework for watershed management decisions within a regional context. Because of this project is directly aligned with Open Space and Mountain Parks charter purposes, Open Space and Mountain Parks plans to allocate \$10,000 annually toward this project, for three years, pending final budget approval by city council.

We urge you to put a high priority on this proposed project, and look forward to working with the Watershed Center to build resiliency in the St. Vrain Basin.

Sincerely,



Dan Burke

Director

City of Boulder Open Space and Mountain Parks Department

October 28, 2019

Bureau of Reclamation
Mail Code: 84-27814
P.O. Box 25007
Denver, CO 80225

RE: Letter of Support for the Left Hand Watershed Center's Water SMART Cooperative Watershed Management Program, Phase I Grant

Dear Review Committee,

The Keep it Clean Partnership is pleased to write in support of the Bureau of Reclamation WaterSMART Cooperative Watershed Management Program application being submitted by Left Hand Watershed Center (the Watershed Center), entitled "**St. Vrain Basin Watershed Restoration Planning.**" Completion of this project is vital to our community as we work toward regional collaboration and partnerships and help ensure long term, basin-wide restoration and recovery.

The proposed project under consideration brings together diverse partnerships throughout the St. Vrain Basin to collaborate on a regional watershed restoration plan and framework for assessing watershed health indicators in the St. Vrain Basin to make more informed management decisions as a basin and to track broad progress towards basin-wide watershed health goals.

We feel that the Watershed Center has done a good job bringing the appropriate stakeholders to the table and developing a proposal that will result in implementation of a successful project that is well aligned with the goals of the Bureau of Reclamation and the stakeholders. The Watershed Center has a proven record of accomplishment, implementing successful science-based, collaborative, projects in both Left Hand and St. Vrain Creeks and we look forward to working with them on this regional watershed planning effort. By completing this project, we will increase connectivity of the many partners and agencies completing watershed planning and management in the St. Vrain Basin, and build upon the legacy of recently completed projects, while also contributing to the scientific body of knowledge for watershed restoration.

We are particularly pleased that the proposed project will include a thorough assessment of existing data and watershed health indicators because we believe increased collaboration and data integration are crucial to improving water quality throughout the St. Vrain Basin. This task will align closely with our organization's ongoing work in collaborative water quality monitoring. Keep it Clean Partnership staff intend to work closely with Left Hand Watershed Center to contribute to this project as we are able and make sure our efforts are well coordinated. We plan to allocate \$5,000 dollars annually toward this project, for three years to a total of \$15,000.

In addition, we already pay an estimated \$162,969.29 annually to outside entities through our shared instream water quality monitoring program that will be a valuable matching contribution to this project. This includes \$84,469.29 from the City of Longmont, \$32,000.00 from the City of Boulder, \$17,500.00 from the City of Lafayette, \$16,000.00 from the Town of Erie, \$8,000.00 from the Town of Superior, and \$5,000.00 from the City of Louisville and does not include internal expenses.

We urge you to put a high priority on this proposed project, and look forward to working with the Watershed Center to build resiliency in the St. Vrain Basin.

Sincerely,

Kevin Peterson
Keep it Clean Partnership Coordinator
Boulder County Public Health
3450 Broadway
Boulder, CO 80304
303-441-1439
kpeterson@bouldercounty.org





October 29, 2019

Bureau of Reclamation
Mail Code: 84-27814
P.O. Box 25007
Denver, CO 80225

RE: Letter of Support for the Left Hand Watershed Center's Water SMART Cooperative Watershed Management Program, Phase I Grant

Dear Review Committee,

On behalf of the St. Vrain and Left Hand Water Conservancy District ("District") I am writing in support of the Bureau of Reclamation WaterSMART Cooperative Watershed Management Program application being submitted by Left Hand Watershed Center (the Watershed Center), entitled "**St. Vrain Basin Watershed Restoration Planning.**" Completion of this project is vital to our community as we work toward regional collaboration and partnerships and help ensure long term, basin-wide restoration and recovery.

The proposed project under consideration brings together diverse partnerships throughout the St. Vrain Basin to collaborate on a regional watershed restoration plan and framework for assessing watershed health indicators in the St. Vrain Basin to make more informed management decisions as a basin and to track broad progress towards basin-wide watershed health goals.

The District believes that the Watershed Center has done a great job of bringing together the appropriate stakeholders to develop a proposal that will result in implementation of a successful project that is well aligned with the goals of the District. In support of this, the District intends to provide up to \$5,000 annually for three years.

Thank you for your consideration to fund this important work to build resiliency in the St. Vrain Basin.

Sincerely,

A handwritten signature in blue ink that reads "Sean T. Cronin".

Sean T. Cronin
Executive Director

Date: 7 November 2019

To: US Department of the Interior, Bureau of Reclamation WaterSMART program selection committee

From: Tony Cheng

RE: Letter of support for Left Hand Watershed Center proposal

To Whom It May Concern:

I am writing this letter of support for the Left Hand Watershed Center's application entitled, "St. Vrain Basin Watershed Restoration Planning", that is being submitted to the WaterSMART Cooperative Watershed Management Program administered by the US Bureau of Reclamation.

I direct the Colorado Forest Restoration Institute at Colorado State University. The Institute's mission is to develop, translate, and apply locally-relevant science-based knowledge to restore the resilience of forested environments to wildfire for the benefit of people, watersheds, and ecosystems. We accomplish this mission through collaborative partnerships with governmental, scientific, and community-based non-governmental organizations, such as the Left Hand Watershed Center.

The proposed project under consideration brings together diverse partnerships throughout the St. Vrain Basin to collaborate on a regional watershed restoration plan and framework for assessing watershed health indicators. A critical component of this approach is addressing forest conditions and wildfire risk. In turn, these indicators will significant value to watershed managers and stakeholders to make more informed management decisions and to track progress towards basin-wide watershed health goals.

The Watershed Center has a proven record of accomplishment, implementing successful science-based, collaborative, projects in both Left Hand and St. Vrain watersheds and we look forward to working with them on this regional watershed planning effort, should it be selected for funding. I encourage the program selectors to prioritize consideration of this proposal for funding support. It has a high probability of making a positive impact to water resource sustainability and community benefits, and advance the goals of the WaterSMART program.

Sincerely,

A handwritten signature in black ink, appearing to read 'T Cheng', written on a light-colored background.

Tony Cheng
Director, Colorado Forest Restoration Institute
Professor, Forest & Rangeland Stewardship



October 29, 2019

Bureau of Reclamation
Mail Code: 84-27814
P.O. Box 25007
Denver, CO 80225



RE: Letter of Support for the Left Hand Watershed Center's Water SMART Cooperative Watershed Management Program, Phase I Grant

Dear Review Committee,

The Saint Vrain Creek Coalition is pleased to write in support of the Bureau of Reclamation WaterSMART Cooperative Watershed Management Program application being submitted by Left Hand Watershed Center (the Watershed Center), entitled "**St. Vrain Basin Watershed Restoration Planning.**" Completion of this project is vital to our community as we work toward regional collaboration and partnerships and help ensure long term, basin-wide restoration and recovery.

The proposed project under consideration brings together diverse partnerships throughout the Saint Vrain Basin to collaborate on a regional watershed restoration plan and framework for assessing watershed health indicators in the St. Vrain Basin to make more informed management decisions as a basin and to track broad progress towards basin-wide watershed health goals.

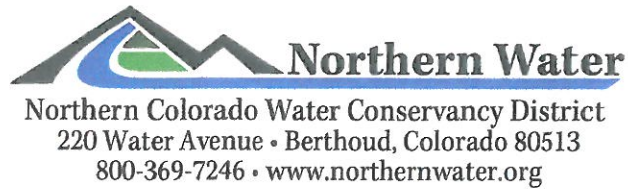
We feel that the Watershed Center has done a good job bringing the appropriate stakeholders to the table and developing a proposal that will result in implementation of a successful project that is well aligned with the goals of the Bureau of Reclamation and the stakeholders. The Watershed Center has a proven record of accomplishment, implementing successful science-based, collaborative, projects in both Left Hand and St. Vrain creeks and we look forward to working with them on this regional watershed planning effort. By completing this project, we will increase connectivity of the many partners and agencies completing watershed planning and management in the St. Vrain Basin, and build upon the legacy of recently completed projects, while also contributing to the scientific body of knowledge for watershed restoration.

We are particularly pleased that the proposed project will support regional collaboration, and flood resiliency. We urge you to put a high priority on this proposed project, and look forward to working with the Watershed Center to build resiliency in the St. Vrain Basin.

Sincerely,

A handwritten signature in black ink that reads "Karla A. Brown". The signature is fluid and cursive, with a long horizontal line extending from the end.

Karla Brown
SVCC Board President



October 23, 2019

Bureau of Reclamation
Mail Code: 84-27814
P.O. Box 25007
Denver, CO 80225

RE: Letter of Support for the Left Hand Watershed Center Watershed Restoration Application

Dear Review Committee;

Northern Water is pleased to support the Colorado Water Conservation Board (CWCB) Colorado Watershed Restoration Program application being submitted by Left Hand Watershed Center (the Watershed Center), entitled "Adaptive Management at Scale." Completion of this project is vital to our community as we work toward regional collaboration and partnerships and help ensure long term, basin-wide restoration and recovery.

The proposed project under consideration with CWCB brings together diverse partners throughout the St. Vrain Basin to collaborate on a regional adaptive management framework for assessing watershed health indicators in the St. Vrain Basin, to make more informed management decisions as a basin, and to track broad progress towards basin-wide watershed health goals.

We feel that the Watershed Center has done a good job bringing the appropriate stakeholders to the table and developing a proposal that will result in implementation of a successful project that is well aligned with the goals of the CWCB and the stakeholders. The Watershed Center has a proven record of accomplishment, implementing successful science-based, collaborative, projects in both Left Hand and St. Vrain Creeks and we look forward to working with them on this regional adaptive management effort. By completing this project, we will increase connectivity of the many partners and agencies completing watershed planning and management in the St. Vrain Basin, and build upon the legacy of recently completed projects, while also contributing to the scientific body of knowledge for river restoration.

Northern Water is particularly pleased that the proposed project will address watershed health through the thoughtful development and implementation of adaptive management. Northern Water has several initiatives that employ adaptive management and knows firsthand how useful this tool can be.

We urge you to put a high priority on this proposed project and look forward to working with the Watershed Center to build resiliency in the St. Vrain Basin.

Sincerely,

Esther Vincent
Director Environmental Services
Northern Water



October 31, 2019

Bureau of Reclamation
Mail Code: 84-27814
P.O. Box 25007
Denver, CO 80225

RE: Letter of Support for the Left Hand Watershed Center's Water SMART Cooperative Watershed Management Program, Phase I Grant

Dear Review Committee,

The Left Hand Water District is writing in support of the Bureau of Reclamation WaterSMART Cooperative Watershed Management Program application being submitted by Left Hand Watershed Center (the Watershed Center), entitled "St. Vrain Basin Watershed Restoration Planning." Completion of this project is the next logical step for our community as the Watershed Center works beyond recovery from the 2013 flood and expands on their successes to create a vibrant basin-wide collaborative movement to enhance watershed health for Coloradans. This work is especially important to the tens of thousands of people who rely on the St. Vrain River and Left Hand Creek as a drinking water supply.

Funding this project will expand on the Watershed Center's success in creating partnerships throughout the St. Vrain Basin. The Watershed Center has a proven record of accomplishment, implementing successful science-based collaborative projects in both Left Hand and St. Vrain Creeks; all of which align with the goals of the Bureau of Reclamation. As stakeholders who rely heavily on the combined efforts of our community to ensure a high quality supply of drinking water, the Left Hand Water District sees the funding of this project as critical in achieving the long term goals of managing a pristine watershed.

We urge you to put a high priority on this proposed project and look forward to continuing our working relationship with the Watershed Center to build resiliency in the St. Vrain Basin.

Sincerely,

Left Hand Water District
Christopher Smith, PE
General Manager

Left Hand Ditch Company

PO Box 229 Niwot, CO 80544
Office: 303.652.9965 Cell: 720.629.0232

11/7/2019

Bureau of Reclamation
Mail Code: 84-27814
P.O. Box 25007
Denver, CO 80225

RE: Letter of Support for the Left Hand Watershed Center's Water SMART Cooperative Watershed Management Program, Phase I Grant

Dear Review Committee,

We are pleased to write in support of the Bureau of Reclamation WaterSMART Cooperative Watershed Management Program application being submitted by Left Hand Watershed Center (the Watershed Center), entitled "**St. Vrain Basin Watershed Restoration Planning.**" Completion of this project is vital to our community as we work toward regional collaboration and partnerships and help ensure long term, basin-wide restoration and recovery.

The proposed project under consideration brings together diverse partnerships throughout the St. Vrain Basin to collaborate on a regional watershed restoration plan and framework for assessing watershed health indicators in the St. Vrain Basin to make more informed management decisions as a basin and to track broad progress towards basin-wide watershed health goals.

We feel that the Watershed Center has done a good job bringing the appropriate stakeholders to the table and developing a proposal that will result in implementation of a successful project that is well aligned with the goals of the Bureau of Reclamation and the stakeholders. The Watershed Center has a proven record of accomplishment, implementing successful science-based, collaborative, projects in both Left Hand and St. Vrain Creeks and we look forward to working with them on this regional watershed planning effort. By completing this project, we will increase connectivity of the many partners and agencies completing watershed planning and management in the St. Vrain Basin, and build upon the legacy of recently completed projects, while also contributing to the scientific body of knowledge for watershed restoration.

We urge you to put a high priority on this proposed project, and look forward to working with the Watershed Center to build resiliency in the St. Vrain Basin.

Sincerely,



Terry L. Plummer
Vice President of
Maintenance and Operations



File Code: 2500
Date: November 1, 2019

Review Committee
Bureau of Reclamation
Mail Code: 84-27814
P.O. Box 25007
Denver, CO 80225

Dear Review Committee:

The Arapaho and Roosevelt National Forests and Pawnee National Grassland, Boulder Ranger District, is pleased to write in support of the Bureau of Reclamation WaterSMART Cooperative Watershed Management Program application being submitted by Left Hand Watershed Center (the Watershed Center), entitled "**St. Vrain Basin Watershed Restoration Planning.**" Completion of this planning effort will provide new opportunities for collaboration and partnerships in the development and completion of long term, basin-wide restoration and recovery efforts across many boundaries in a watershed of vital importance on the Colorado Front Range and its communities.

The proposed project under consideration brings together diverse partnerships throughout the St. Vrain Basin to collaborate on a regional watershed restoration plan and framework for assessing watershed health indicators in the St. Vrain Basin with the goal of making more informed management decisions as a basin and to track broad progress towards basin-wide watershed health goals.

The Watershed Center has done a good job bringing the appropriate stakeholders to the table and developing a proposal that will result in implementation of a successful project that is well aligned with the goals of the Bureau of Reclamation and the stakeholders. The Watershed Center has a proven record of accomplishment, implementing successful science-based, collaborative, projects in both Left Hand and St. Vrain Creeks and we look forward to working with them on this regional watershed planning effort. By completing this project, we will increase connectivity of the many partners and agencies completing watershed planning and management in the St. Vrain Basin, and build upon the legacy of recently completed projects, while also contributing to the scientific body of knowledge for watershed restoration.

We urge you to put a high priority on this proposed project and look forward to working with the Watershed Center to build resiliency in the St. Vrain Basin.

Sincerely,

MONTE WILLIAMS
Forest Supervisor





COLORADO
**Division of Reclamation,
Mining and Safety**
Department of Natural Resources

1313 Sherman Street, Room 215
Denver, CO 80203

October 29, 2019

Bureau of Reclamation
Mail Code: 84-27814
P.O. Box 25007
Denver, CO 80225

Re: DRMS Letter of Support for the Left Hand Watershed Center's Water SMART Cooperative Watershed Management Program, Phase I Grant

Dear Review Committee,

The State of Colorado Division of Reclamation Mining and Safety (DRMS) is pleased to write in support of the Bureau of Reclamation Water SMART Cooperative Watershed Management Program application being submitted by Left Hand Watershed Center (the Watershed Center), entitled "St. Vrain Basin Watershed Restoration Planning."

The proposed project under consideration brings together diverse partnerships throughout the St. Vrain Basin to collaborate on a regional watershed restoration plan and framework for assessing watershed health indicators in the St. Vrain Basin to make more informed management decisions as a basin and to track broad progress towards basin-wide watershed health goals.

We feel that the Watershed Center has done a good job bringing the appropriate stakeholders to the table and developing a proposal that will result in implementation of a successful project that is well aligned with the goals of the Bureau of Reclamation. The Watershed Center has a proven record of accomplishment, implementing successful science-based, collaborative, projects in both Left Hand and St. Vrain Creeks. By completing this project, they will increase connectivity of the many partners and agencies completing watershed planning and management in the St. Vrain Basin, and build upon the legacy of recently completed projects, while also contributing to the scientific body of knowledge for river restoration.

The Watershed Center has been proactive in evaluating and incorporating legacy mining issues and water quality sampling into their planning and stream restoration projects wherever possible. Receiving this grant would help continue the current momentum by the Watershed Center and other partners by developing a plan to evaluate and prioritize potential mine reclamation projects that could positively impact water quality. The adaptive management document to help guide future work would be an asset. We urge you to put a high priority on this proposed project, and look forward to working with the Watershed Center to build resiliency in the St. Vrain Basin.

Sincerely,

Erica S. Crosby
Senior Environmental Protection Specialist



(Date)

Bureau of Reclamation
Mail Code: 84-27814
P.O. Box 25007
Denver, CO 80225

RE: Letter of Support for the Left Hand Watershed Center's Water SMART Cooperative Watershed Management Program, Phase I Grant

Dear Review Committee,

The Boulder Flycasters are pleased to write in support of the Bureau of Reclamation WaterSMART Cooperative Watershed Management Program application being submitted by Left Hand Watershed Center (the Watershed Center), entitled "**St. Vrain Basin Watershed Restoration Planning.**" Completion of this project is vital to our community as we work toward regional collaboration and partnerships and help ensure long term, basin-wide restoration and recovery.

The proposed project under consideration brings together diverse partnerships throughout the St. Vrain Basin to collaborate on a regional watershed restoration plan and framework for assessing watershed health indicators in the St. Vrain Basin to make more informed management decisions as a basin and to track broad progress towards basin-wide watershed health goals.

We feel that the Watershed Center has done a good job bringing the appropriate stakeholders to the table and developing a proposal that will result in implementation of a successful project that is well aligned with the goals of the Bureau of Reclamation and the stakeholders. The Watershed Center has a proven record of accomplishment, implementing successful science-based, collaborative, projects in both Left Hand and St. Vrain Creeks and we look forward to working with them on this regional watershed planning effort. By completing this project, we will increase connectivity of the many partners and agencies completing watershed planning and management in the St. Vrain Basin, and build upon the legacy of recently completed projects, while also contributing to the scientific body of knowledge for watershed restoration.

We urge you to put a high priority on this proposed project, and look forward to working with the Watershed Center to build resiliency in the St. Vrain Basin.

Sincerely,
Boulder Flycasters



October 31, 2019
RE: Letter of Support
Adaptive Management at Scale
Left Hand Watershed Center

Dear Reviewers,

St. Vrain Anglers Chapter of Trout Unlimited is fully supportive of the proposed scope of work within the proposal Adaptive Management at Scale submitted by Left Hand Watershed Center. We share the goals of this project and believe that its deliverables are needed by the watershed stakeholders to support future collaborative decision making in regards to watershed health.

This project offers an opportunity to expand the partnership between organizations and citizens to document watershed health. This is a partnership that Trout Unlimited sees itself at the core of, and our chapter intends to continue to partner with Left Hand Watershed Center in this collaborative effort.

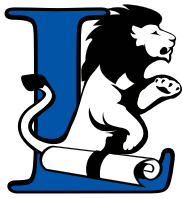
Trout Unlimited has demonstrated continued commitment to the Colorado Water Plan and Stream Management Planning efforts throughout the state. Developing an Adaptive Management Framework for the St. Vrain Basin is a practical tool to support integration of ongoing Stream Management Planning efforts.

We respectfully request your support by funding this proposal.

Sincere Regards,

A handwritten signature in cursive script that reads "Barbara a Luneau".

Barbara Luneau
St. Vrain Anglers Chapter Trout Unlimited
President



Lyons Middle Senior High School
A Strong School Community Where Students Excel

100 McConnell Drive
Lyons, CO 80504
303-823-6631
lms.hs.svvsd.org

November 12, 2019

Bureau of Reclamation
Mail Code: 84-27814
P.O. Box 25007
Denver, CO 80225

RE: Letter of Support for the Left Hand Watershed Center's Water SMART Cooperative Watershed Management Program, Phase I Grant

Dear Review Committee,

Lyons Middle Senior High School is pleased to write in support of the Bureau of Reclamation WaterSMART Cooperative Watershed Management Program application being submitted by Left Hand Watershed Center (the Watershed Center), entitled "**St. Vrain Basin Watershed Restoration Planning.**" Completion of this project is vital to our community as we work with Left Hand Watershed to have our students collect data about our watershed and make decisions to support the resiliency of our Lyons community.

We feel that the Watershed Center has done a good job bringing the appropriate stakeholders to the table. The Watershed Center has a proven record of accomplishment, implementing successful science-based, collaborative projects in both Left Hand and St. Vrain Creeks and we look forward to continuing our work with them. Left Hand Watershed Center is currently working with Lyons Elementary and Lyons Middle Senior to support student learning through the lens of our St. Vrain River.

We are particularly pleased that the proposed project will address continued support to allow Left Hand Watershed Center to implement and support watershed science at Lyons Middle Senior High School. Left Hand Watershed Center will continue to collaborate with staff to support our state curriculum standards through river science, data collection, analysis, and project-based learning. Additionally, we plan on partnering for community outreach projects in the future.

We urge you to put a high priority on this proposed project, and look forward to working with the Watershed Center to educate our students about how the St Vrain can become more resilient.

Sincerely,

Colleen Ford
Assistant Principal
Lyons Middle Senior High School

November 11, 2019

Bureau of Reclamation
Mail Code: 84-27814
P.O. Box 25007
Denver, CO 80225

RE: Letter of Support for the Left Hand Watershed Center's Water SMART Cooperative Watershed Management Program, Phase I Grant

Dear Review Committee,

We are pleased to write in support of the Bureau of Reclamation WaterSMART Cooperative Watershed Management Program application being submitted by Left Hand Watershed Center (the Watershed Center), entitled "**St. Vrain Basin Watershed Restoration Planning.**" Completion of this project is vital to our community as we work toward regional collaboration and partnerships and help ensure long term, basin-wide restoration and recovery.

The proposed project under consideration brings together diverse partnerships throughout the St. Vrain Basin to collaborate on a regional watershed restoration plan and framework for assessing watershed health indicators in the St. Vrain Basin to make more informed management decisions as a basin and to track broad progress towards basin-wide watershed health goals.

We feel that the Watershed Center has done a good job bringing the appropriate stakeholders to the table and developing a proposal that will result in implementation of a successful project that is well aligned with the goals of the Bureau of Reclamation and the stakeholders. The Watershed Center has a proven record of accomplishment, implementing successful science-based, collaborative, projects in both Left Hand and St. Vrain Creeks and we look forward to working with them on this regional watershed planning effort. By completing this project, we will increase connectivity of the many partners and agencies completing watershed planning and management in the St. Vrain Basin, and build upon the legacy of recently completed projects, while also contributing to the scientific body of knowledge for watershed restoration.

We are particularly pleased the project planning area includes the St. Vrain Creek through Lyons and we look forward to working with Left Hand Watershed Center to improve ecological function of the Saint Vrain Creek, and to help protect public and private properties and resources in the watershed.

We urge you to put a high priority on this proposed project, and look forward to working with the Watershed Center to build resiliency in the St. Vrain Basin.

Sincerely,



Victoria Simonsen
Town Administrator

DOUBLE GATEWAY
TO THE ROCKIES

TELEPHONE

303.823.6622

FACSIMILE

303.823.8257

432 5TH AVENUE • P.O. BOX 49
LYONS • COLORADO 80540

51

TOWNOFLYONS.COM

Oct. 30,2019

Bureau of Reclamation
Mail Code: 84-27814
P.O. Box 25007
Denver, CO 80225

REGARDING:

A letter of Support for the Left Hand Watershed Center's Water SMART Cooperative Watershed Management Program, Phase I Grant

Dear Review Committee,

Representing the community of Jamestown, Colorado, I am pleased to write in support of the Bureau of Reclamation WaterSMART Cooperative Watershed Management Program application being submitted by Left Hand Watershed Center (the Watershed Center), entitled "**St. Vrain Basin Watershed Restoration Planning.**"

Completion of this project is very important to our community. For Jamestown, the James Creek portions of the St. Vrain Watershed provides our entire town water supply as well as being a primary source of ecological, educational, and recreational activity for our community.

The proposed project is expected to bring together diverse partnerships throughout the St. Vrain Basin in order to continue our collaboration toward a regional watershed restoration plan. Watershed health is key for us, both in assessing that health and then creating a framework we can act upon. We appreciate any and all opportunities to work toward regional collaboration and partnerships and help maintain the existing health of our watershed system.

Please do consider this proposed project. In Jamestown we are actively working with the Watershed Center to build resiliency in the St. Vrain Basin. And we support any effort to continue to improve the St. Vrain Basin.

Thank You,
Roger Loving
Town of Jamestown Trustee

10/30/2019
Bureau of Reclamation
Mail Code: 84-27814
P.O. Box 25007
Denver, CO 80225

RE: Letter of Support for the Left Hand Watershed Center's Water SMART Cooperative Watershed Management Program, Phase I Grant

Dear Review Committee,

I am pleased to write in support of the Bureau of Reclamation WaterSMART Cooperative Watershed Management Program application being submitted by Left Hand Watershed Center (the Watershed Center), entitled "**St. Vrain Basin Watershed Restoration Planning.**" Completion of this project is vital to our community as we work toward regional collaboration and partnerships and help ensure long term, basin-wide restoration and recovery.

The proposed project under consideration brings together diverse partnerships throughout the St. Vrain Basin to collaborate on a regional watershed restoration plan and framework for assessing watershed health indicators in the St. Vrain Basin to make more informed management decisions as a basin and to track broad progress towards basin-wide watershed health goals.

I feel that the Watershed Center has done a good job bringing the appropriate stakeholders to the table and developing a proposal that will result in implementation of a successful project that is well aligned with the goals of the Bureau of Reclamation and the stakeholders. The Watershed Center has a proven record of accomplishment, implementing successful science-based, collaborative, projects in both Left Hand and St. Vrain Creeks and I look forward to working with them on this regional watershed planning effort. By completing this project, we will increase connectivity of the many partners and agencies completing watershed planning and management in the St. Vrain Basin, and build upon the legacy of recently completed projects, while also contributing to the scientific body of knowledge for watershed restoration.

I am particularly pleased that the application submitted by the Watershed Center emphasized basin-wide efforts at restoration and recovery. Context is extremely important for restoration efforts and assessing basin-wide efforts that link across partnerships is integral for enhancing the ecological resiliency of the watershed.

I urge you to put a high priority on this proposed project, and look forward to working with the Watershed Center to build resiliency in the St. Vrain Basin.

Sincerely,

Dr. Katherine B. Lininger
Assistant Professor
Department of Geography
katherine.lininger@colorado.edu; 303-492-2860

October 29, 2019

Bureau of Reclamation
Mail Code: 84-27814
P.O. Box 25007
Denver, CO 80225

RE: Letter of Support for the Left Hand Watershed Center's Water SMART Cooperative Watershed Management Program, Phase I Grant

Dear Review Committee,

I am pleased to write this letter in support of the Bureau of Reclamation WaterSMART Cooperative Watershed Management Program application being submitted by Left Hand Watershed Center (the Watershed Center), entitled "**St. Vrain Basin Watershed Restoration Planning.**" Completion of this project is vital to our community as we work toward regional collaboration and partnerships and help ensure long term, basin-wide restoration and recovery. I serve as Faculty Director of CU-Boulder's *Center for Sustainable Landscapes and Communities* (CSLC), and the work of LHWC aligns very well with our efforts to engage communities in building knowledge and informing action on environmental and sustainability issues of local and regional importance.

The proposed project under consideration brings together diverse partnerships throughout the St. Vrain Basin to collaborate on a regional watershed restoration plan and framework for assessing watershed health indicators in the St. Vrain Basin to make more informed management decisions as a basin and to track broad progress towards basin-wide watershed health goals.

In my view, the Watershed Center has done a good job bringing the appropriate stakeholders to the table and developing a proposal that will result in implementation of a successful project that is well aligned with the goals of the Bureau of Reclamation and the stakeholders. The Watershed Center has a proven record of accomplishment, implementing successful science-based, collaborative, projects in both Left Hand and St. Vrain Creeks and I look forward to working with them on this regional watershed planning effort. By completing this project, we will increase connectivity of the many partners and agencies completing watershed planning and management in the St. Vrain Basin, and build upon the legacy of recently completed projects, while also contributing to the scientific body of knowledge for watershed restoration.

I am particularly pleased that the proposed project will integrate scientific knowledge and stakeholder engagement toward collaborative watershed planning and management, and look forward to coordinating our CSLC efforts with activities of the LHWC.

I urge you to put a high priority on this proposed project, and look forward to working with the Watershed Center to build resiliency in the St. Vrain Basin.

Sincerely,



Sharon K. Collinge
Professor, Environmental Studies Program and
Faculty Director, Center for Sustainable Landscapes and Communities

D.2.2.9.Official Resolution



Resolution: 2019-01
October 15th, 2019

A resolution of the Left Hand Watershed Center to commit to the financial and legal obligations associated with receipt of a financial assistance award under Funding Opportunity Announcement No. BOR-DO-19-F010

Whereas, the Left Hand Watershed Center (Watershed Center) recently expanded watershed management and restoration services to the St. Vrain Basin (HUC 8 code: 10190005);

Whereas, the Watershed Center has been actively growing partnerships in this expanded geography in order to collaborate on regional watershed management planning;

Whereas, the Watershed Center staff have identified suitable grant opportunities to fund regional watershed management planning;

Whereas, one of the suitable grant opportunities identified to fund regional watershed management planning is the U.S. Bureau of Reclamation WaterSMART Cooperative Watershed Management Program, Phase I Grants, Announcement No. BOR-DO-19-F010;

Whereas, this grant opportunity requires a resolution as part of the grant application;

Whereas, Christopher Smith, Watershed Center Board President has legal authority to sign resolutions and contracts;

Whereas, the 13 members of the Watershed Center Board of Directors present at the October 15th 2019 board meeting voted to approve and support Watershed Center staff submitting an application to FOA No. BOR-DO-19-F010 for the purposes of undertaking regional watershed management planning, with no members abstaining and no members objecting;

Whereas, the Watershed Center has capability to provide the amount of funding and in-kind contributions specified in the funding plan;

Whereas, the Watershed Center will work with the Reclamation to meet established deadlines for entering into a grant or cooperative agreement;

Now, therefore, be it resolved that the Left Hand Watershed Center commits to the financial and legal obligations associated with receipt of a financial assistance award under Funding Opportunity Announcement No. BOR-DO-19-F10.

A handwritten signature in blue ink, appearing to read 'CS + [unclear]', written over a horizontal line.

Christopher Smith, Board President
Left Hand Watershed Center

D.2.3. Unique Entity Identifier and System for Award Management

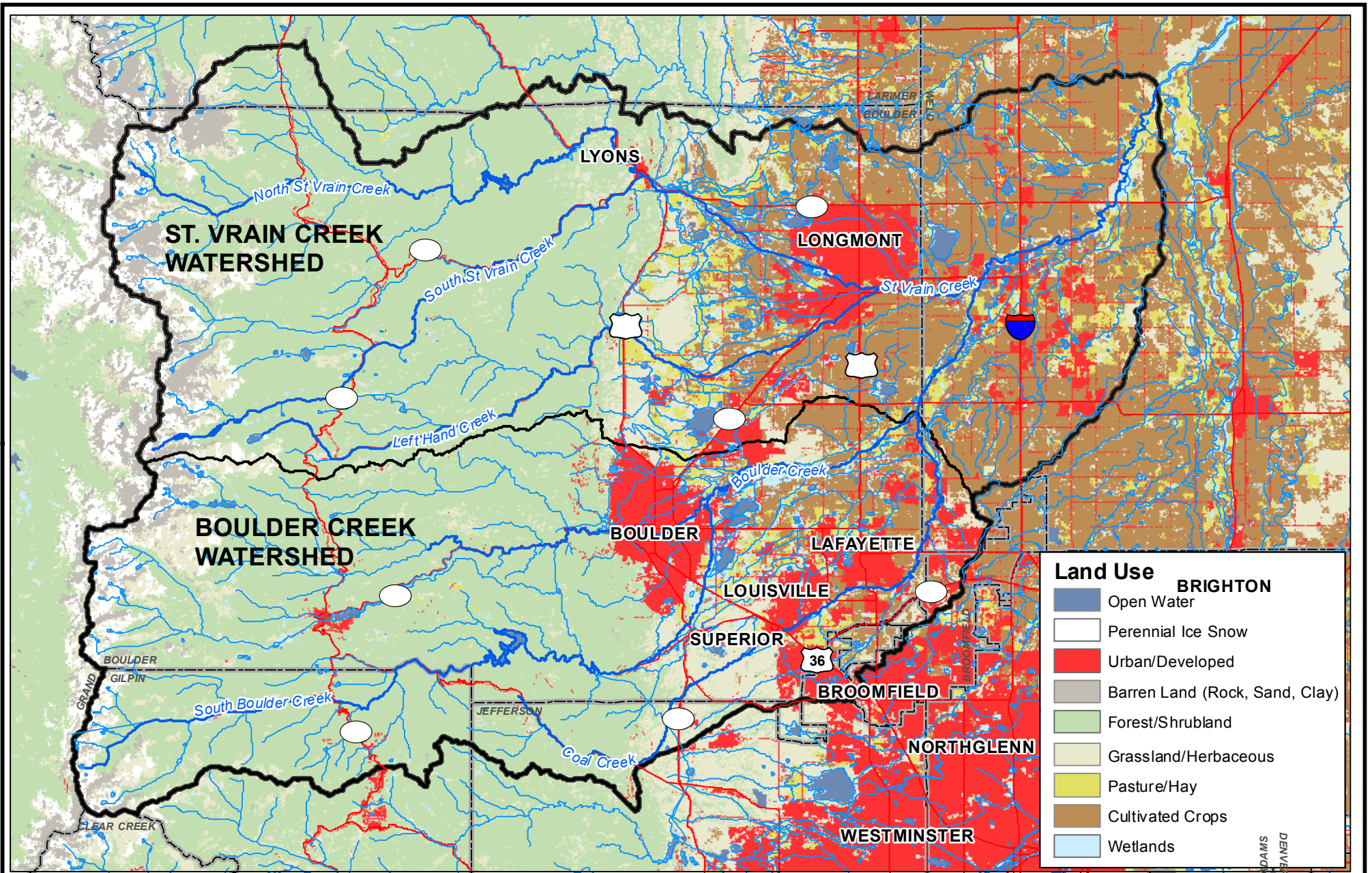
Left Hand Watershed Center is registered and active with SAMs. Our DUNS number is 164605615 and our CAGE Code is 7JZ49. We have included a copy of our active registration page. We currently receive other federal funds and are therefore confident that we will be maintaining an active SAM registration.

Lefthand Watershed Oversight Group DUNS: 164605615 CAGE Code: 7JZ49 Status: Active Expiration Date: 03/25/2020 Purpose of Registration: All Awards	6800 Nimbus Rd Longmont, CO, 80503-8707 , UNITED STATES
---	---

Entity Overview

Entity Registration Summary
Name: Lefthand Watershed Oversight Group Doing Business As: Lwog Business Type: Business or Organization Last Updated By: Jessica Olson Registration Status: Active Activation Date: 03/26/2019 Expiration Date: 03/25/2020

Exclusion Summary
Active Exclusion Records? No



Land Use

	Open Water
	Perennial Ice Snow
	Urban/Developed
	Barren Land (Rock, Sand, Clay)
	Forest/Shrubland
	Grassland/Herbaceous
	Pasture/Hay
	Cultivated Crops
	Wetlands

Path: Z:\Project Files\121-002\121-002-010\CAD-GIS\GIS\Figure1_Boulder319BaseMap.mxd

Base Map: National Land Cover Dataset

WRIGHT WATER ENGINEERS, INC.
 2490 W 26TH AVE 100A
 DENVER, CO. 80211
 (303) 480-1700

ST. VRAIN WATERSHED

LAND USE MAP

1 inch = 27,832 feet
 0 8,000 16,000 32,000 Feet

PROJECT NO. 121-002.010

FIGURE 1

Project occurs in Congressional Districts CO-004 & CO-002